



**SOUTH EAST ATLANTIC FISHERIES ORGANISATION**

**REPORT OF THE 11th ANNUAL MEETING OF THE COMMISSION, 2014**

**01 – 05 December Windhoek, Namibia**

**The Secretariat**

**1 Strand Street, NatMirc  
Swakopmund, Namibia  
Phone: + 264 (64) 406-885**

**Email: [info@seafo.org](mailto:info@seafo.org)  
Url: [www.seafo.org](http://www.seafo.org)**

**Ms. Marisa Kashorte  
Chairperson of SEAFO Commission  
[marisak@daff.gov.za](mailto:marisak@daff.gov.za)**

---

This document is produced in the official languages (English and Portuguese). Copies are available from the Secretariat and on the website.

## Table of Contents

1. Opening of the Meeting .....	2
2. Adoption of Agenda and Meeting Arrangements .....	2
3. Introduction and Admission of Observers .....	2
4. Opening Statements .....	2
5. Status of the Convention in Respect of Membership.....	2
6. Report of the Scientific Committee.....	2
7. Report of the Compliance Committee.....	5
8. Report on the Standing Committee on Administration and Finance (SCAF) .....	6
9. Norway's proposed amendments to Conservation Measure xx/14 on VMEs.....	6
10. Reports from meetings attended by the Executive Secretary .....	6
11. Reports of SEAFO Representatives at 2014 International Meetings .....	6
12. Nominations of Parties to represent SEAFO at 2015 International Meetings.....	7
13. Election of Chair and vice-Chair .....	7
14. Any Other Matters .....	7
15. Venue and Date of 2015 Commission meeting.....	7
16. Closure of the Meeting.....	7
ANNEX 1 – LIST OF DELEGATES .....	8
ANNEX 2 - AGENDA OF THE 11TH ANNUAL MEETING OF THE COMMISSION .....	12
ANNEX 3 - OPENING STATEMENTS BY CONTRACTING PARTIES.....	13
ANNEX 4 - OPENING STATEMENTS BY OBSERVERS.....	18
ANNEX 5 – COMPLIANCE COMMITTEE REPORT 2014.....	19
ANNEX 6 – THE STANDING COMMITTEE ON ADMINISTRATION AND FINANCE (SCAF) REPORT 2014 ....	37
ANNEX 7 – JAPANESE EXPLORATORY FISHING PLAN FOR 2015.....	46
ANNEX 8 – GUIDELINES FOR FISHERIES RESEARCH.....	54
ANNEX 9 – CONSERVATION MEASURES .....	58
ANNEX 9A – CONSERVATION MEASURE 29/14 ON BOTTOM FISHING ACTIVITIES AND VMEs .....	59
ANNEX 9B – CONSERVATION MEASURE 28/14: ON TOTAL ALLOWABLE CATCHES AND RELATED CONDITIONS FOR PATAGONIAN TOOTHFISH, AND DEEP-SEA RED CRAB FOR 2015, ALFONSINO, ORANGE ROUGHY AND PELAGIC ARMOURHEAD FOR 2015 & 2016 .....	77

## **1. OPENING OF THE MEETING**

- 1.1. The 11th Annual Meeting of the SEAFO Commission was convened at the Safari Hotel, Windhoek, Namibia, from 1-5 December 2014. The list of participants is provided in Annex 1.
- 1.2. The meeting was officially opened by the Chairperson who warmly welcomed the delegates and expressed her wishes for a successful meeting. She also expressed her gratitude towards the Government of Namibia for hosting the meeting.

## **2. ADOPTION OF AGENDA AND MEETING ARRANGEMENTS**

- 2.1. The Meeting adopted the agenda with minor changes. (Annex 2).

## **3. INTRODUCTION AND ADMISSION OF OBSERVERS**

- 3.1. Observers present were the United States of America, Northwest Atlantic Fisheries Organization (NAFO), the North Atlantic Marine Mammal Commission (NAMMCO), the Commission for the Conservation of Antarctic Marine Living Resources (CCAMLR), and the North East Atlantic Fisheries Commission (NEAFC).

## **4. OPENING STATEMENTS**

- 4.1. The Heads of Delegations introduced members of their respective delegations. All seven of the SEAFO Contracting Parties were represented.
- 4.2. All Contracting Parties presented opening statements (Annex 3).
- 4.3. The United States of America presented an opening statement as an observer (Annex 4).

## **5. STATUS OF THE CONVENTION IN RESPECT OF MEMBERSHIP**

- 5.1. The Executive Secretary informed the meeting that no new notification for accession to the Commission was received in 2013 by the FAO.

## **6. REPORT OF THE SCIENTIFIC COMMITTEE**

- 6.1. The Chair of the Scientific Committee presented the 2014 Scientific Committee report to the Commission.
- 6.2. Scientific Committee reviewed all available data and revisited all assessments done for the various stocks and proposed harvest control rules for all species except for orange roughy.
- 6.3. The Scientific Committee considered a proposal for Japan's continued exploratory fishing in 2015 and recommendations based on the current exploratory fishing protocol (CM 26/13). The Scientific Committee recommended that the Commission consider effort restriction after 10 experimental hauls.
- 6.4. All stock status reports for alfonsino, deep-sea red crab, Patagonian toothfish, pelagic armourhead/southern boarfish and orange roughy were reviewed and updated.
- 6.5. The Scientific Committee took note that South Africa conducted annual assessments based on commercial data for Patagonian toothfish within the EEZ and the relevant assessments will be forwarded to the Scientific Committee for consideration during 2015. The Scientific Committee reviewed research done in CCAMLR and used growth parameters for Patagonian toothfish during the 2014 stock assessment. Namibia informed the Scientific Committee that no research/assessment were conducted for orange roughy within the EEZ in 2014.

- 6.6. The Scientific Committee was informed that the Japanese vessel caught three seabirds during day-fishing operations, and subsequently reverted back to night-fishing operations.
- 6.7. The bottle test experiments were conducted successfully and results submitted to the Secretariat via the Observer forms.
- 6.8. Scientific Committee was not able to determine, with certainty, that there is a need for technical gear regulations for any of the SEAFO fisheries. The Scientific Committee noted that the main objective for regulating gear specifications, in particular mesh size, is to protect the juvenile component of the stock. In the SEAFO context this has relevance for only two fisheries, namely: the deep-sea red crab pot fishery; and the trawl fishery.
- 6.9. The Scientific Committee made the following recommendation to the Commission for adoption:
  - 6.9.1. The Scientific Committee noted with appreciation that the contributions made by the external expert from FAO, Mr. Pedro de Barros, and the discussions with him significantly enhanced the results accomplished during the 2014 Scientific Committee meeting. The Scientific Committee recommends that the presence of an external expert might be considered for future meetings.

**ACTION:** The Commission adopted the request with the understanding that the FAO ABNJ will support the activity for 2015, and further noted that the Commission will re-assess the need for a consultant on an annual basis, following a recommendation from the Scientific Committee.

- 6.9.2. The Scientific Committee recommends that Japan proceed with their proposed 2015 exploratory fishing plan (SEAFO Scientific Committee Report 2014, Appendix XI)<sup>1</sup>, with the reservation concerning effort restriction after the 10 experimental hauls. The Scientific Committee asks the Commission to consider this issue.

**ACTION:** The Commission reviewed the exploratory fishing plan and adopted, with amendments, Japan's proposal for 2015. A noteworthy amendment included the following: *On completion of 10 research hauls, the vessel will continue the exploratory fishing in order to cover as many representative areas as possible in the fishable zone.* The final text of the plan is attached as Annex 7.

- 6.9.3. **Alfonsino:** In accordance with the proposed harvest control rule (HCR), using the average catch from 2010-2012, the recommended TAC is 132 t for the Division B1 for 2015-2016. Considering the possibility that alfonsino occurs outside Division B1 the Scientific Committee maintains its recommendation from 2012 for a TAC for the entire SEAFO CA of 200 tonnes of which a maximum of 132 tonnes may be taken in Division B1.

**ACTION:** The Commission adopted both the harvest control rule and the TAC of 200 tonnes in the SEAFO Convention Area, with a limit of 132 tonnes in Division B1 for 2015 and 2016.

- 6.9.4. **Patagonian toothfish:** The Scientific Committee recommended that a HCR (Section 4.7 of status report) be adopted.

**ACTION:** The Commission adopted the harvest control rule and requests the Scientific Committee (2015) to discuss if stock assessments or HCR should be applied for future TACs.

- 6.9.5. **Pelagic armourhead:** The Scientific Committee recommended that a TAC, corresponding to the output level resulting from using the HCR based on the average catch of 2011 and 2012, is set at 143t.

---

<sup>1</sup> Annual SEAFO Scientific Committee Report 2014 - <http://www.seafo.org/Documents/Scientific-Committee>

**ACTION:** The Commission adopted both the harvest control rule and the TAC of 143 tonnes for 2015 and 2016.

- 6.9.6. **Orange roughy:** The Scientific Committee recommends the continuation of the moratorium for 2015 and 2016 on directed fishery in Division B1 and allowance for bycatch limit as a proportion (10%) of the average of landings from the last five years with positive catches (i.e. 2001-2005), equivalent to 4 tonnes. A precautionary TAC of 50 t is set for the remainder of the SEAFO CA.

**ACTION:** The Commission adopted the TAC of 50 tonnes for areas outside Division B1, and a zero TAC for directed fisheries in Division B1, and a bycatch provision of 4 tonnes in Division B1 for 2015 and 2016.

- 6.9.7. **Deep-sea red crab:** The Scientific Committee noted that adopting an HCR might be considered for the deep-sea red crab fishery and suggested such a rule.

**ACTION:** The Commission adopted the harvest control rule for deep-sea red crab.

The Commission noted that some Contracting Parties underlined that both results of stock assessment and agreed HCR should be considered when the Scientific Committee advises/recommends TACs for each species.

- 6.9.8. AP 20: The Scientific Committee proposed a monitoring and bycatch regime (Section 20.3) for the directed southern boarfish and alfonsino fisheries.

**ACTION:** The Commission reviewed the bycatch regime and included it in Conservation Measure 28/14 (Annex 9B)

- 6.9.9. AP 21: The Scientific Committee informed the Commission that the Japanese vessel caught three seabirds during day-fishing operations, and subsequently reverted back to night-fishing operation.

**ACTION:** Commission took note of the bycatch of seabirds and requested the Scientific Committee to follow up on the issue during the next meeting. The Scientific Committee should establish whether other birds were caught, the status of the birds and if more could be done to protect seabirds during fishing operations.

- 6.9.10. AP 23: The Scientific Committee recommended that the Commission adopts the provisional guidelines proposed for fisheries research involving sea-going activity in the SEAFO CA. The Commission may consider if there is a need for specific guidelines for fisheries research and other marine science activity in the closed areas, including what research activity is required to consider re-opening of closures.

**ACTION:** The Commission adopted the Research Guidelines (Annex 8) developed by the Scientific Committee in order to facilitate data/information submission to the Commission, in addition to the existing measures contained in the SEAFO SYSTEM (Article 30). The Commission noted that these guidelines are adopted as a voluntary measure for non-members, taking into account Article 86 (f) of the United Nations Convention on the Law of the Sea. The Commission requested the Secretariat to make the guidelines available on the SEAFO website.

The Commission noted that specific guidelines for re-opening of closed areas will be considered at the Scientific Committee in 2015.

- 6.9.11. AP 24: The Chair of the Scientific Committee informed the Commission that the TOR was not clear and the Scientific Committee has attempted to classify gear currently used in the SEAFO CA.

The Chair of the Scientific Committee informed the Commission that the stock status reports for each species contains information regarding fishing gear.

**ACTION:** The Commission requested the Secretariat to list the fishing gears used in the SEAFO CA on the SEAFO website.

6.9.12. AP 25: The Scientific Committee noted that some vessels fishing in the SEAFO CA did not provide data on conversion factors; hence no analysis based on this source could be conducted by the Scientific Committee.

6.9.12.1. The Scientific Committee proposed that for the interim the *C. maritae* CFs be applied to the *C. erythraea* fishery until such time that the needed data is obtained.

**ACTION:** The Commission adopted the recommendation.

6.9.12.2. For the Patagonian toothfish: the Scientific Committee recommended an HGT (head, gutted & tailed) CF of 1.70. An alternative to constant CF is area and time specific CF capturing the variation over time and space in *condition factor* of the fish. This would require ample sampling at regular intervals during the fishing period.

**ACTION:** The Commission adopted the recommendation.

6.9.12.3. For the pelagic armourhead: the Scientific Committee recommended an HG CF of 1.70. An alternative to constant CF is area and time specific CF capturing the variation over time and space in *condition factor* of the fish. This would require ample sampling at regular intervals during the fishing period.

**ACTION:** The Commission adopted the recommendation.

#### 6.9.13. **The Scientific Committee budget for 2015**

The Scientific Committee requested a provision of N\$40 000 to be made available in order to facilitate FAO ABNJ related activities.

**ACTION:** The Commission adopted the N\$ 40,000.00 request by the Scientific Committee

#### 6.9.14. **The Date and Place of the next Scientific Committee meeting**

**ACTION:** The Commission requested the Chair of the Scientific Committee to liaise with members of the Scientific Committee to agree on a date and venue in Namibia for the next Scientific Committee meeting by correspondence and to submit the information to the Secretariat two weeks after the Commission meeting for circulation to Contracting Parties.

The Scientific Committee subsequently agreed to meet 30<sup>th</sup> September - 9<sup>th</sup> October 2015. The meeting will take place in Windhoek, Namibia.

6.10. The Commission welcomed the scientific research survey on board RV Dr. Fritjof Nansen under joint collaboration between the FAO Deep-sea Program and the EAF Nansen Project in early 2015, and encouraged all Contracting Parties to nominate scientists to participate.

## **7. REPORT OF THE COMPLIANCE COMMITTEE**

7.1. The Chair of the Compliance Committee presented the 2014 Compliance Committee Report to the Commission (Annex 5).

7.2. The Commission took note that compliance amongst the Contracting Parties has improved.

7.3. The Commission noted that EU expressed a willingness to assist the Secretariat to install a system of VMS provision at marginal or no cost to the Secretariat. The meeting expressed appreciation for the EU offer.

7.4. The Commission took note of the EU's offer to submit a proposal on catch reporting and VMS message transmissions at the next Compliance Committee meeting.

7.5. The Commission endorsed the recommendations made by the Compliance Committee adopted the provisional IUU Vessel list with the deletion of a vessel (Dolphin) from the list.

## **8. REPORT ON THE STANDING COMMITTEE ON ADMINISTRATION AND FINANCE (SCAF)**

8.1. The Chair of the Standing Committee on Administration and Finance presented the 2014 report (Annex 6).

8.2. The Commission noted that the audit report is unqualified.

8.3. The Commission took note that all Contracting Parties have paid their respective contributions for 2014.

8.4. The Commission adopted changes to the Secretariats' staff remuneration, namely: the Data Managers' salary has been increased by 5% based on additional compliance related duties being performed, and all staff members received an increase of 5.6%, to account for the rate of inflation in Namibia.

8.5. The Commission endorsed the recommendations made by the SCAF and adopted the 2015 Budget and took note of the contributions of Contracting Parties.

8.6. The Commission adopted the extension of the contract with PricewaterhouseCoopers for another three years.

## **9. NORWAY'S PROPOSED AMENDMENTS TO CONSERVATION MEASURE XX/14 ON VULNERABLE MARINE ECOSYSTEMS IN THE SEAFO CONVENTION AREA**

9.1. Norway presented the proposed conservation measure.

9.2. The Commission revised and adopted the Norwegian proposal with the Annexes as Conservation Measure 29/14 on Bottom Fishing Activities and Vulnerable Marine Ecosystems in the SEAFO Convention Area (Annex 9A).

## **10. REPORTS FROM MEETINGS ATTENDED BY THE EXECUTIVE SECRETARY**

10.1. The Commission took note that the Executive Secretary has attended several meetings and promoted the image of SEAFO.

10.2. The Commission concluded that the logistics for the Performance Review should be agreed upon in 2015. The Executive Secretary shall circulate the TOR to Contracting Parties for elaboration in 2015. The Commission adopted a budget amount of N\$ 300,000.00 to cover the expected cost to conduct the Performance Review. The budget amount will be accumulated over the next two years (2015 & 2016). It was also pointed out that staff regulations could also be assessed by the performance review panel.

## **11. REPORTS OF SEAFO REPRESENTATIVES AT 2014 MEETINGS OF OTHER INTERNATIONAL ORGANISATIONS**

11.1. The Commission took note of the reports by the various SEAFO representatives namely, EU (NAFO and NEAFC), Norway (NAMMCO and CCAMLR) and South Africa (ICCAT).

## **12. NOMINATIONS OF PARTIES TO REPRESENT SEAFO AT 2015 MEETINGS OF OTHER INTERNATIONAL ORGANIZATIONS**

12.1. The Commission adopted the following nominees to represent SEAFO as observers at the following meetings:

ICCAT: South Africa  
NAFO and SIOFA: EU  
NAMMCO and NEAFC: Norway  
CCAMLR: Korea

## **13. ELECTION OF CHAIR AND VICE-CHAIR**

13.1. South Africa and Angola were re-elected as Chair and vice-Chair, respectively for 2015 and 2016.

## **14. ANY OTHER MATTERS**

14.1. No other matters were tabled for discussion.

## **15. VENUE AND DATE OF 2015 COMMISSION MEETING**

15.1. The date for the 12<sup>th</sup> Commission meeting is 30<sup>th</sup> November to 4<sup>th</sup> December 2015 and the meeting will be held in Swakopmund, Namibia.

15.2. South Africa offered to host the Commission meeting in 2016 pending approval.

## **16. CLOSURE OF THE MEETING**

16.1. The Chairperson closed the meeting at 18h00, Thursday 04<sup>th</sup> December 2014 and she commended the Contracting Parties for their efficient and effective conduct during the meeting. She thanked delegates for their positive inputs and wished everyone a safe journey back home.



## Annex 1 – List of Delegates

### ANGOLA

Dr. Dielobaka NBOMBELE (Head of Delegation)  
Cabinete De Intercambio Internacional  
Ministerio Das Pescas  
Ministry of Fisheries  
P. O. Box 83  
Avenida 4 Fevereira N:30, Edificio Atlantico  
Phone: +24 49 23 333 663  
Fax: +244 222 309731  
Email: [dielobaka@gmail.com](mailto:dielobaka@gmail.com)

### EUROPEAN UNION

Orlando FACHADA (Head of Delegation)  
DG Fisheries and Maritime Affairs  
External Policy and International and  
Regional Arrangements  
European Union  
Rue Josseph 11,99  
B-1049 Brussels, Belgium  
Tel: 32-2-299-0857  
Fax: 32-2-295-5700  
Email: Orlando.[Fachada@ec.europa.eu](mailto:Fachada@ec.europa.eu)

Luis Lopez ABELLAN  
Instituto Espanol de Oceanografia  
Via Espaldon Darsena Pesquera, PCL 8  
38120 Santa Cruz de Tenerife  
Tel: +34-922-549400  
Fax: +34-922-549554  
Email: [Luis.Lopez@ca.ieo.es](mailto:Luis.Lopez@ca.ieo.es)

### JAPAN

Kenro IINO (Head of Delegation)  
Special advisor to the Minister of  
Agriculture, Forestry and Fisheries  
1-2-1 Kasumigaseki, Chiyoda-ku, Tokyo  
Japan, 100-8907  
Tel: +81-3-3502-8460  
Fax: +81-3-3504-2649  
Email: [keniino@hotmail.com](mailto:keniino@hotmail.com)

Hyoë SUZUKI  
Fisheries Agency of Japan  
1-2-1 Kasumigaseki Chiyoda-ku  
Tokyo, Japan  
Tel: +81 3 3502 8460  
Fax: +81 90 2629 9584  
Email: [hyoe\\_suzuki@nm.maff.go.jp](mailto:hyoe_suzuki@nm.maff.go.jp)

Masanori WADA  
Ministry of Foreign Affairs  
2-2-1- Kasumigaseki Chiyoda-ku  
Tokyo, Japan  
Tel: +81 3-5501 8338  
Fax: +81 3 5501 8332  
Email: [Masanori.wada@mofa.go.jp](mailto:Masanori.wada@mofa.go.jp)

Yasuhito UEDA  
Fisheries Agency of Japan  
1-1-1 Kasumigaseki Chiyoda-ku  
Tokyo, Japan  
Tel: 81 3 3502 8460  
Fax: 81 3 3504 2649  
Email: [yasuhito\\_ueda@nm.maff.go.jp](mailto:yasuhito_ueda@nm.maff.go.jp)

Junichiro OKAMOTO  
Japan Overseas Fishing Association  
NK-Bldg, 6F, 3-6 Kanda Ogawa-Machi,  
Chiyoda-ku, Tokyo  
Japan, 101-0052  
Tel: +81-3-3291-8508  
Fax: +81-3-3233-3267  
Email: [jokamoto@jdsta.or.jp](mailto:jokamoto@jdsta.or.jp)

Takeshi SHIBATA  
Taiyo A & F Co.,Ltd  
Toyomishinko Bldg., 4-5, Toyomi-Cho, Chuo-ku  
Tel: +81-3-6220-1260  
Fax: +81-3-6220-1460  
Email: [kani@maruha-nichiro.co.jp](mailto:kani@maruha-nichiro.co.jp)

Tsutomu Tom NISHIDA  
Associate Scientist  
National Research Institute of Far Seas  
Fisheries  
5-7-1, Orido, Shimizu-Ward, Shizuoka-City,  
Shizuoka, Japan, 424-8633  
Tel/Fax: +81-54-336-6052  
Email: [tnishida@affrc.go.jp](mailto:tnishida@affrc.go.jp)

Kimiyoshi HIWATARI  
Technical Officer  
International Affairs Division  
Fisheries Agency of Japan  
2-2-1, Kasumigaseki-ku, Tokyo  
Japan, 100-8907  
Tel: +81-3-3502-8460  
Fax: +81-3-3504-2649  
Email: [kimiyoshi\\_hiwatari@nm.maff.go.jp](mailto:kimiyoshi_hiwatari@nm.maff.go.jp)

Antonio MANSINHO

Managing Director  
AMSTAI (Pty) Ltd  
P.O.Box 49  
Walvis Bay, Namibia  
Tel: +264-64-206294/95  
Fax: +264-64-206207  
Email: [tony@namibnet.com](mailto:tony@namibnet.com)

Naomisa MIYAGAWA  
TAIYO  
Tel: 0811296294  
Email: [taiyoct@mweb.co.za](mailto:taiyoct@mweb.co.za)

Toshihiro Hasegawa  
TAIYO  
Tel: 27 83-321-3397  
Email: [taiyoct@mweb.co.za](mailto:taiyoct@mweb.co.za)

## REPUBLIC OF KOREA

Chungmo JUNG (Head of Delegation)  
Ministry of Oceans and Fisheries  
Government Complex Sejong, 94 Dasom 2-Ro,  
Sejong Special Self-governing City 339-012  
Republic of Korea  
Tel: +82-44-200-5371  
Mobile: -82-10-7728-2908  
Fax: +82-44-200-5379  
Email: [jamesjung@korea.kr](mailto:jamesjung@korea.kr)

Kunwoong JI  
Assistant Manager  
Overseas Business DEPT  
Insung Corporation  
Insung Building, 113-2  
Hannau – Dong, Youngsan-Go  
Seoul, KOREA  
Tel: 82-9375 8104  
Email: [kunwoong.ji@gmail.com](mailto:kunwoong.ji@gmail.com)

Jiwon YOON  
Ministry of Oceans and Fisheries  
Korea overseas Fisheries Cooperation Institute  
Level3, KT&G Building, Munyero 137,  
Seogu, Daejeon, Republic of Korea  
Tel: +82 42 471 6433  
Mobile: 82 10 2106 7555  
Fax: 82 42 471 6427  
Email: [jiwoon.yoon@kofci.org](mailto:jiwoon.yoon@kofci.org)

## NAMIBIA

Titus ILENDE (Head of Delegation)  
Deputy Director: Resource Management  
Ministry of Fisheries and Marine Resources  
Private Bag 13355

Windhoek, Namibia  
Tel: +264-61-205-3071  
Fax: +264-61-220-558  
Email: [tiilende@mfmr.gov.na](mailto:tiilende@mfmr.gov.na)

Bony AMUTSE  
Deputy Director: Operations-MCS  
Ministry of Fisheries and Marine Resources  
Private Bag 13355  
Windhoek, Namibia  
Tel: +264-61-205-3013  
Mobile: 0811287921  
Fax: +264-61-205-204-412  
Email: [bamutse@mfmr.gov.na](mailto:bamutse@mfmr.gov.na)

Stanley NDARA  
Control Fisheries Inspector: Operations  
Ministry of Fisheries and Marine Resources  
P.O. Box 1594  
Walvis Bay, Namibia  
Phone: +264-64-201-6250  
Fax: +264-64-2016-228  
Email: [sndara@mfmr.gov.na](mailto:sndara@mfmr.gov.na)

Beau TJIZOO  
Chief Fisheries Biologist: Resource Mangement  
Ministry of Fisheries and Marine Resources  
Private Bag 912  
Swakopmund, Namibia  
Tel: +264-64-4101159  
Fax: +264-64-404385  
Email: [btjizoo@mfmr.gov.na](mailto:btjizoo@mfmr.gov.na)

Martha Mutilifa- Haufiku  
Fisheries Observer Agency  
Walvis Bay, Namibia  
Tel: 264 64 219 500  
Fax: 264 64 219 548  
Email: [mmutilifa@foa.com.na](mailto:mmutilifa@foa.com.na)

Elwin KRUGER  
Fisheries Observer Agency  
Walvis Bay, Namibia  
Cell: 081 1229346  
Fax: 264 64 203 658  
Email: [ekruger@foa.com.na](mailto:ekruger@foa.com.na)

## NORWAY

Terje LOBACH (Head of Delegation)  
Senior Legal Adviser  
Directorate of Fisheries  
P.O. Box 2009, Nordney  
5817 Bergen

Phone: +47-90835495  
Fax: +47 55238090  
Email: [terje.lobach@fiskeridir.no](mailto:terje.lobach@fiskeridir.no)

Odd Aksel BERGSTAD  
Institute of Marine Research  
Tel: +47-37059019  
Fax: +47-22249580  
Email: [oddaksel@imr.no](mailto:oddaksel@imr.no)

Kristoffer Krohg BJORLUND  
Ministry of Trade, Industry and Fisheries  
Tel: +22 24 63 23  
Fax: +47-22 24 95 85  
Email: [Kristoffer-Krohg.Bjorklund@fkd.dep.no](mailto:Kristoffer-Krohg.Bjorklund@fkd.dep.no)

## REPUBLIC OF SOUTH AFRICA

Saasa Pheeha (Head of Delegation)  
Agriculture, Forestry & Fisheries  
Private Bag X2  
Roggebaai, 8012,  
CAPE TOWN  
Email: [SaasaP@daff.gov.za](mailto:SaasaP@daff.gov.za)

## USA

John O'Brien  
202.647.3228  
Office of the Marine Conservation  
Bureau of Oceans and International  
Environmental and Scientific Affairs  
U.S. Department of State  
Tel: +1 202 262 6993  
Email: [O'BrienJB@state.gov](mailto:O'BrienJB@state.gov)

## SECRETARIAT & SUPPORTING STAFF

Marisa KASHORTE (Chair of Commission)  
Agriculture, Forestry & Fisheries  
Policy Analyst: Intergovernmental and  
International Relations for Fisheries  
Private Bag X2  
Roggebaai, 8012  
CAPE TOWN  
Tel: +27 21 402 3558  
Fax: +27 21 425 3626  
Email: [MarisaK@daff.gov.za](mailto:MarisaK@daff.gov.za)

Graca BAULETH D'ALMEIDA (Chair of SCAF)  
Director-Resource Management  
Ministry of Fisheries and Marine Resources  
Private Bag 13355  
Windhoek, Namibia  
Tel: +264-061-205-3114

Fax: +264-061-205-558  
Email: [gdalmeida@mfmr.gov.na](mailto:gdalmeida@mfmr.gov.na)

Paul KAINGE (Chair of Scientific Committee)  
Chief Fisheries Biologist: Resource  
Management  
Ministry of Fisheries and Marine Resources  
Private Bag 912  
Swakopmund, Namibia  
Tel: +264-064-4101127  
Fax: +264-64-404385  
Email: [pkainge@mfmr.gov.na](mailto:pkainge@mfmr.gov.na)

Domingos AZEVEDO (Chair of Compliance  
Committee)  
Servico Nacional De Fiscalizacao Pesque  
Ira E Da Aquicultura  
Minister Das Pescas  
Ministry of Fisheries  
P.O.Box 83  
Avenida 4 Fevereiro N:30, Edificio Atlantico  
Phone: +24 49 23 340 100  
Fax: +24 42 22 309 731  
Email: [domingosazevedo2001@yahoo.com](mailto:domingosazevedo2001@yahoo.com)

Ben van ZYL  
Executive Secretary  
NATMIRC, Strand Street No.1  
P.O.Box 4862, Vineta, Swakopmund,  
NAMIBIA  
Phone: +264-64-406885  
Fax: +264-64-406884  
Email: [bvanzyl@seafo.org](mailto:bvanzyl@seafo.org)

George CAMPANIS  
Database Manager  
NATMIRC, Strand Street No.1  
P.O.Box 4862, Vineta, Swakopmund,  
NAMIBIA  
Phone: +264-64-406885  
Fax: +264-64-406884  
Email: [gcompanis@seafo.org](mailto:gcompanis@seafo.org)

Anna SNYDERS  
Administrative Officer  
NATMIRC, Strand Street No.1  
P.O.Box 4862, Vineta, Swakopmund,  
NAMIBIA  
Phone: +264-64-406885  
Fax: +264-64-406884  
Email: [asnnyders@seafo.org](mailto:asnnyders@seafo.org)

Iyana DOMROGH  
NATMIRC, Strand Street No.1  
P.O.Box 4862, Vineta, Swakopmund,  
NAMIBIA  
Phone: +264-64-406885

Fax: +264-64-406884  
Email: [jyanadomrogh@gmail.com](mailto:jyanadomrogh@gmail.com)

Windhoek, Namibia  
Phone: +264 61 301032  
Fax: +264 88622209  
Email: [jerrydos.santos@gmail.com](mailto:jerrydos.santos@gmail.com)

**INTERPRETER**

J. A. DOS SANTOS  
Lingua Consultancy Service

## Annex 2 - Agenda of the 11th Annual Meeting of the Commission

**Windhoek, Namibia, 01 – 05 December 2014**

**Venue:** Safari Hotel, Kuiseb2, Windhoek

**Chair:** Ms M. Kashorte (2013-2014)

**Vice-Chair:** Angola (2013–2014)

	<b>Agenda Item</b>	<b>Working Document</b>
1	Opening of the Meeting	
2	Adoption of the Agenda and Meeting Arrangements	DOC/COM/00/2014 DOC/COM/01/2014 DOC/COM/02/2014
3	Introduction and Admission of Observers	
4	Opening Statements by Contracting Parties and Observers	
5	Status of the Convention in Respect of Membership	
6	Report of the Scientific Committee	DOC/COM/03/2014
7	Report of the Compliance Committee	DOC/COM/04/2014
8	Report of the Standing Committee on Administration and Finance	DOC/COM/05/2014
9	Norway's proposed amendments to Conservation Measure XX/14 on Vulnerable Marine Ecosystems in the SEAFO Convention Area	DOC/COM/06/2014 DOC/COM/07/2014 DOC/COM/13/2014
10	Reports from meetings attended by the Executive Secretary	DOC/COM/08/2014 DOC/COM/09/2014 DOC/COM/10/2014
11	Reports of SEAFO Representatives at 2014 meetings of other International Organisations	DOC/COM/11/2014 DOC/COM/12/2014 DOC/COM/13/2014 DOC/COM/14/2014
12	Nominations of Parties to represent SEAFO at 2015 meetings of other International Organization	
13	Election of Chair and Vice-Chair	
14	Any Other Matters	
15	Venue and Date of 2015 Commission meeting	
16	Closure of the Meeting	

## **Annex 3 - Opening Statements by Contracting Parties**

### **Angola**

Ms Chairperson of the SEAFO Commission;

Mr Secretary General;

Head of Delegations;

Delegates and invited Guests;

On behalf of the Angolan delegation, I would like to express my gratitude for the invitation extended to me by the Chairperson of the SEAFO Commission, to participate in the 11th Meeting of the Commission being held here in Windhoek, the beautiful capital city of Namibia.

On the other hand, I would like to equally thank our Executive Secretary, and his valued staff for having created the needed conditions for the success of the works of the commission and the meetings of the committees, without forgetting the much work behind the production and dissemination of the documents.

With the regards to the development of our organization, and above all the improvement in the sustainable management of marine resources in the convention area, Angola hereby reiterates its commitment to contribute in all areas with the aim of achieving the objectives of the Organization.

Although we do not yet have up to now, the appropriate means and interested partners in the areas of exploration of marine resources in the convention areas, we continue counting on the good understanding of the Organization, believing that in the near future, Angola benefits from the quotas.

With the regard to the survey that the organization will carry out in the convention area, particularly the seamounts, it is the wish of Angola that the seamounts found around our country be also included in the survey campaigns.

As usual, we count with the cooperation of SEAFO, and we hope that in the near future, Angola will bear good fruits for being part of SEAFO.

I thank you

### **European Union**

Madam Chair,

Distinguished Delegates,

Ladies and Gentlemen.

The EU Delegation is once again very happy to be here in Windhoek for the 11<sup>th</sup> Annual Meeting of SEAFO, after our very interesting and productive visit to Swakopmund last year. We would also like to thank the Namibian Government, the National Fishing Authority and the SEAFO secretariat for their very warm welcome.

The European Union strongly supports the adoption of conservation measures based on science aiming at the sustainable exploitation of the natural resources. In this context, we welcome the work and recommendations of the Scientific Committee, which sets the direction to be followed in terms of Conservation Measures, notably as regards SEAFO stocks, protections of VMEs and scientific work and research. Decisions should be based as far as possible on the best available scientific advice.

We also intend to take stock of the implementation of the System of Observation, Inspection, compliance and enforcement as well as the situation on IUU fisheries in the SEAFO Convention Area and views concerning compliance and monitoring of vessels operating in SEAFO. The EU supports the Compliance Committee works and the Plenary decisions aiming at strengthening compliance by all Contracting Parties and boosting the fight against IUU fishing.

To conclude, I would like to underline our willingness to work constructively and co-operatively with all SEAFO Contracting Parties this week, in order to finish on a successful and positive note on Friday.

Thank you.

## **Japan**

Madam Chair, Distinguished Delegates, Ladies and Gentlemen.

The Japanese delegation would like to express our appreciation to the Government of Namibia for hosting the 11th Annual Meeting of SEAFO in this beautiful city of Windhoek.

We also would like to thank Mr. Ben van Zyl, the Executive Secretary, and other Secretariat staff for the preparation and arrangements.

There are many agenda items in this meeting. As a responsible fisheries management organization, discussions about Total Allowable catch and VMEs protection measures are important issues during this week.

However, our delegation would like to emphasize the importance of Guideline for fisheries research. The SEAFO convention area is one of the last areas left which contain undeveloped deep water fishery grounds.

In order to carry out sustainable fishery with appropriate VMEs protection in new fishery areas, data collection through fishery research is fundamental. Japan believes that adoption of practical fishery research guidelines which allow new fishery grounds opening is one of the priority issues during this meeting.

Madam chair, this year's Scientific Committee report often refers so called Harvest Control Rules, and proposed using the rules for setting TAC. The Harvest Control Rules directly affect management decision. Therefore, before Scientific Committee considers using the rules, the Commission should instruct the Scientific Committee on the use of the Harvest Control Rules.

In this regards, clear understanding among managers is essential. Hence, the Commission should discuss what the Harvest Control Rules are and their effects to management in order for managers to properly understand and implement the rules.

Japan is ready to work with all other meeting participants on such challenging and important issues at the table during this meeting.

Thank you very much.

## **Korea**

Good morning to you all, Madam Chair and Executive Secretary, all distinguished delegates and ladies and gentlemen. It is my great honor to extend my cordial greetings to all of you. This delegation would also like to present our warm thanks to government of Namibia and secretariat for hosting this meeting and provide us a good facility for this important meeting.

This year again, we will discuss TAC and other important conservation measures for the SEAFO management species in Convention area. Last year, commission discussed TAC for armourhead, but we could not reach to agreement. As a sole fishing nation for Armourhead, Korea awaited the SC advice on this species through the qualitative and quantitative assessment. Unfortunately, the advice from SC this year is not very substantial nor persuasive in our view. The tool that SC used for TAC advise this year was not through the modeling nor the analytical study, but only using a simple calculation for getting an average number of 2 years catch.

Besides, I do understand the difficulties of SC that they have not enough data to study. However TAC is very radical measure and it should be built on the solid scientific background. In this regards, this delegation would like to highlight and urge all commission members' attention on this issue, and we want your advise about directions to proceed.

I am truly looking forward to hearing diverse and enlightening views and opinions from commission members and I also hope this meeting will allow us to have a good progress and successful discussion.

Thank you

## **Namibia**

Madam Chairperson  
Distinguished delegates and Observers  
Ladies and gentlemen

Namibia has the honour to welcome you all to this year's annual meeting of SEAFO, to be held here in Windhoek, the capital city of Namibia. It is indeed a great pleasure to see all of you here today!

Ladies and gentlemen, the challenge being faced by many RFMOs the world over, to conserve and sustainably manage the living natural resources, is enormous. However, we are pleased to note the progress SEAFO has been making in achieving its goal of sustainable management and conservation of living natural resources. Just last year, SEAFO concluded its System of Observation, Inspection, Compliance and Enforcement, better known as the "System". The adoption of the "System" shall go a long way in combating IUU fishing in the Convention Area.

SEAFO also joined hands with the FAO ABNJ (Areas Beyond National Jurisdictions) project in assessing the resources in the Convention Area. In this regard, FAO availed an expert who assisted the SEAFO Scientific Committee at its 2014 annual meeting in conducting the assessments and providing scientific advice to the Commission. I am informed that the involvement of the FAO expert has contributed significantly to the improvement of the work of the Scientific Committee and hence, that of the Commission. This is a remarkable achievement, indeed! This year, we again look forward to more fruitful deliberations during this meeting and further progress resulting from such deliberations.

Ladies and gentlemen, I also hope that you will find some time to relax and enjoy our capital city and its surroundings; besides the busy schedule we have in-front of us. I therefore wish you a pleasant and enjoyable stay in our country.

I thank you, Madam Chairman!

## **Norway**

Madame Chair, distinguished representatives, observers, ladies and gentlemen.

Once again it's a pleasure for the Norwegian delegation to participate at an annual SEAFO meeting in beautiful Namibia, and I would like to thank the Government of Namibia for its hospitality and also the secretariat for organising the meeting.

Norway is pleased to note the good work undertaken by the Scientific Committee two months ago, in particular that the Commission this year do not have to deal with alternative proposals from scientists within the Scientific Committee. The Committee has addressed a series of special request by the Commission last year and Norway looks forward to discuss a new monitoring and bycatch regime, protocols and guidelines for fishery research, and conversion factors for SEAFO target species. Norway further looks forward to discuss the outcome of the peer review of stock assessment methods used by the Scientific Committee as well as the management advices for fish stocks.

Like other RFMOs, SEAFO has taken a series of measures in response to calls from the UN General Assembly to protect vulnerable marine ecosystems, including area closures and a framework concerning identification of existing and new areas and some interim protocols. The regulations are contained in two separate conservation measures (CMs), one on the management of deep water habitats and ecosystems in the SEAFO Convention Area, which in fact only contains the closed areas, and the other



on bottom fishing activities in the SEAFO Convention Area. Since both CMs address the protection of VMEs it would surely be beneficial to merge these into one CM. Some amendments of the provisions are also required to create clarity, and it is suggested to make the interim protocols permanent. The United Nations will in 2015 review the implementation of the calls by the UN General Assembly to protect VMEs from destructive fishing practices. In order to fulfill the key objectives of the UN General Assembly Resolutions by SEAFO, some improvements of the current CMs are required, in particular concerning environmental impact assessment and exploratory bottom fishing.

The Norwegian delegation is prepared to work hard for the next days, in particular in order to improve the VME framework, and thereby to make this year's annual meeting a success.

## **South Africa**

Madam Chairperson,  
Distinguished delegates and Observers,  
Ladies and gentleman.

Chairperson, regrettably, I'm the only delegate representing South Africa and this should not be misconstrued as South Africa's lack of commitment to SEAFO.

On behalf of the South African Government, I would like to extend our sincere gratitude and appreciation to the Government of Namibia for once again hosting the 11<sup>th</sup> Annual Meeting of the Commission of SEAFO in this beautiful city of Windhoek. I also would like to thank Executive Secretary, as well as all the Secretariat staffs for the excellent preparations and arrangements for our meeting this week. It is a great pleasure for South Africa once again to be back in the "Land of the Brave" and be part of this 11<sup>th</sup> Annual Meeting of the SEAFO Commission.

Chairperson, I would also like to congratulate the Government of Namibia for conducting successful National Elections which have been declared free and fair and we hope that when the results are announced today, they will, as have always been in the past, reflect the will of the citizens of Namibia. As South Africa Chairperson, we are celebrating our 20<sup>th</sup> anniversary of our democracy. This momentous occasion presented an opportunity for us to reflect on how our freedom and democracy were achieved; the progress we have made the past 20 years; and on how South Africans will work to implement Vision 2030. Through this review it has been clear that we are grappling to address poverty, inequality and unemployment, among other challenges, as stipulated in our [National Development Plan \(NDP\)](#). Poverty, inequality and unemployment have been identified as the three nemeses that are South Africa's key priorities over the next coming few years.

In order to make full use of the oceans' potential, the South African government is in the process of developing a blue economy strategy. There is massive untapped economic potential related to the oceans, in the areas such as marine transport and manufacturing, offshore oil and gas exploration, aquaculture and marine protection services and governance. Much of our ocean remains unexplored and there is an urgent need to gather information and describe what resources are available and how they can be used sustainably and I'm sure that this will be explained in details over the next few days.

Fisheries RFMOs such as SEAFO should be used to unlock the resources that lie within the ocean and the sustainable use of these resources which have a meaningful contribution towards the ability to create jobs in years to come. This can be achieved by strengthening institutional framework for the management of SEAFO Convention Area, improving the protection particularly around critically endangered ecosystems, and addressing the skills gap and balance the economic opportunities which the ocean space affords, while maintaining its environmental integrity and Chairperson it worth reminding all delegates that fishing is an economic activity.

Chairperson, we are continuously faced with the challenge of finding the balance between keeping fish production on the rise against meeting the increasing needs of a growing global population, while at the same time allowing overfished populations to recover and preventing other species from joining the

list of the overfished species. SEAFO must continue to improve data collection and support key research initiatives, including those needed to reduce uncertainties in stock assessments. South Africa supports management actions that will help resolve the uncertainty associated with the stock recruitment relationship.

At this annual meeting, we expect all parties to cooperate in adopting management measures that not only follow the scientific advice for SEAFO Species, but give due consideration to the uncertainties in the assessment results and are consistent with the respective rebuilding plans whilst unlocking the economic potential of the seas.

In conclusion Chairperson, we look forward to your leadership. SEAFO is becoming a stronger organization and the actions that can – and must – be taken at this year's meeting will continue this important progress. We look forward to working with you and all other CPCs around this table during this 11<sup>th</sup> Annual Meeting of the Commission to continue the momentum towards a stronger, more effective SEAFO.

On behalf of the Republic of South Africa, I thank you!

## **Annex 4 - Opening Statements by Observers**

### **United States of America**

Good Morning. My name is John O'Brien. I am representing the United States and work in the Office of Marine Conservation from the within the Bureau of Oceans and International Environmental and Scientific Affairs of the United States Department of State.

I would like to first thank you, Chair, and the Executive Secretariat for organizing, Namibia for hosting, and all the contracting parties and observers.

The United States appreciates the opportunity to observe the proceeding of the South East Atlantic Fisheries Organization. While we are not a contracting party, the United States takes note and interest in all the best practices and proceedings of all regional management fisheries organizations.

I am personally new to SEAFO and the world of fisheries management and look forward to working with all of you. Thank You.

## **Annex 5 – Compliance Committee Report 2014**

# **Report of the 7<sup>th</sup> Compliance Committee Meeting**

Windhoek, Namibia 3rd December 2014

## **1. Opening of the meeting**

The Chair, Mr. Domingos Azevedo, from Angola opened the meeting and welcomed Contracting Parties to the 7<sup>th</sup> Compliance Committee meeting.

## **2. Appointment of Rapporteur**

The Secretariat was appointed as rapporteur.

## **3. Adoption of agenda and meeting arrangements**

The agenda was adopted with no changes or additions.

## **4. Introduction of Contracting Party Delegates**

The Heads of Delegations introduced their respective delegates (Annex I).

## **5. Introduction of observers**

The Chair informed the meeting that the United States of America, CCAMLR, NAFO, NAMMCO, and NEAFC were present as observers.

## **6. Executive Secretary's Report on Compliance**

6.1 The Compliance Report was presented by the Executive Secretary.

6.2 The Data Manager presented proposals and costs provided by two VMS service providers (Visma and Trackwell) to implement an independent VMS System at the Secretariat.

6.3 Following a presentation of the Compliance Report, the following points were noted:

6.3.1 Japan confirmed that they provided the Secretariat with their vessel authorization list in August 2014.

6.3.2 Korea indicated that the Boarfish/Alfonsino fishery is using bottom trawl nets.

6.3.3 The EU indicated a willingness to submit any missing logbook data once the Secretariat has circulated an inventory of missing data, and encouraged other Contracting Parties to do the same.

6.3.4 The Secretariat confirmed that all vessels fishing in the SEAFO Convention Area in 2014 were compliant with SEAFOs regulations.

6.3.5 Norway expressed satisfaction with the compliance by Contracting Parties fishing in 2014. However, Norway requested an explanation from South Africa on missing port inspection information, and South Africa assured the meeting that the reports will be forwarded to the Secretariat without delay.

6.3.6 Japan confirmed that their VMS positions are now being transmitted with course and speed.

6.3.7 EU expressed a willingness to assist the Secretariat to install a system of VMS provision at marginal or no cost to the Secretariat. The meeting expressed appreciation for the EU offer.

## **7. Re-evaluation of the "SYSTEM"**

7.1. The Data Manager presented a working paper highlighting shortcomings in the System in regards to the transmission of catch reports and VMS. In particular, he noted the possible confusion between entry and exit catch (COE/COX) and VMS position reports (ENT/EXI). The Secretariat agreed to work with individual Contracting Parties who fish in the Convention Area to ensure that all reporting on catch and VMS is reported as expected by the SEAFO System.

7.2. The meeting thanked the Secretariat for taking the initiative to assist Contracting Parties with improving the completeness of the SEAFO System. However, several Contracting Parties expressed the need for more time to evaluate changes, and EU offered to submit, if need be, a proposal on catch reporting and VMS message transmissions at the next Compliance Committee meeting.

## **8. Consideration of the revision of the SEAFO IUU Vessel list**

8.1. The meeting recommended a new updated list presented by the Executive Secretary with the deletion of a vessel (Dolphin), and cross-checking of NEAFCs IUU list (Annex II).

## **9. Recommended additional measures on compliance**

9.1. No additional measures were submitted by Contracting Parties. Norway noted that since the Commission adopted the SEAFO System, it is constructive to allow time for the implementation.

## **10. Any other Matters**

10.1. There were no other matters tabled for discussion.

## **11. Election of Chairperson**

11.1. The Committee unanimously agreed to the continued appointment of Angola as Chair, and EU as vice Chair.

## **12. Adoption of the Compliance Committee Report**

12.1. The report was adopted with amendments.

## **13. Venue and date of next meeting**

13.1. The meeting venue and date will be determined by the Commission.

## **14. Closure of the Meeting**

14.1. The Chairperson thanked all delegations for their active participation and for their valuable inputs. The meeting thanked the Chair for his efficient handling of the meeting. The meeting adjourned at 11:45am.

## ANNEX I

### ANGOLA

Dr. Dielobaka NBOMBELE (Head of Delegation)  
Cabinete De Intercambio International  
Ministerio Das Pescas  
Ministry of Fisheries  
P. O. Box 83  
Avenida 4 Fevereira N:30, Edificio Atlantico  
Phone: +24 49 23 333 663  
Fax: +244 222 309731  
Email: [dielobaka@gmail.com](mailto:dielobaka@gmail.com)

Domingos AZEVEDO (CHAIR)  
Servico Nacional De Fiscalizacao Pesque  
Ira E Da Aquicultura  
Minister Das Pescas  
Ministry of Fisheries  
P.O.Box 83  
Avenida 4 Fevereira N:30, Edificio Atlantico  
Phone: +24 49 23 340 100  
Fax: +24 42 22 309 731  
Email: [domingosazevedo2001@yahoo.com](mailto:domingosazevedo2001@yahoo.com)

### EUROPEAN UNION

Orlando FACHADA (Head of Delegation)  
DG Fisheries and Maritime Affairs  
External Policy and International and  
Regional Arrangements  
European Union  
Rue Josseph 11,99  
B-1049 Brussels, Belgium  
Tel: 32-2-299-0857  
Fax: 32-2-295-5700  
Email: Orlando.[Fachada@ec.europa.eu](mailto:Fachada@ec.europa.eu)

Luis Lopez ABELLAN  
Instituto Espanol de Oceanografia  
Via Espaldon Darsena Pesquera, PCL 8  
38120 Santa Cruz de Tenerife  
Tel: +34-922-549400  
Fax: +34-922-549554  
Email: [Luis.Lopez@ca.ieo.es](mailto:Luis.Lopez@ca.ieo.es)

### JAPAN

Kenro IINO (Head of Delegation)  
Special advisor to the Minister of  
Agriculture, Forestry and Fisheries  
1-2-1 Kasumigaseki, Chiyoda-ku, Tokyo  
Japan, 100-8907  
Tel: +81-3-3502-8460  
Fax: +81-3-3504-2649  
Email: [keniino@hotmail.com](mailto:keniino@hotmail.com)

Hyo Suzuki  
Fisheries Agency of Japan  
1-2-1 Kasumigaseki Chiyoda-ku  
Tokyo, Japan  
Tel: +81 3 3502 8460  
Fax: +81 90 2629 9584  
Email: [hyoe\\_suzuki@nm.maff.go.jp](mailto:hyoe_suzuki@nm.maff.go.jp)

Masanori WADA  
Ministry of Foreign Affairs  
2-2-1- Kasumigaseki Chiyoda-ku  
Tokyo, Japan  
Tel: +81 3-5501 8338  
Fax: +81 3 5501 8332  
Email: [Masanori.wada@mofa.go.jp](mailto:Masanori.wada@mofa.go.jp)

Yasuhito UEDA  
Fisheries Agency of Japan  
1-1-1 Kasumigaseki Chiyoda-ku  
Tokyo, Japan  
Tel: 81 3 3502 8460  
Fax: 81 3 3504 2649  
Email: [yasuhito\\_ueda@nm.maff.go.jp](mailto:yasuhito_ueda@nm.maff.go.jp)

Junichiro OKAMOTO  
Japan Overseas Fishing Association  
NK-Bldg, 6F, 3-6 Kanda Ogawa-Machi,  
Chiyoda-ku, Tokyo  
Japan, 101-0052  
Tel: +81-3-3291-8508  
Fax: +81-3-3233-3267  
Email: [jokamoto@jdsta.or.jp](mailto:jokamoto@jdsta.or.jp)

Takeshi SHIBATA  
Taiyo A & F Co.,Ltd  
Toyomishinko Bldg., 4-5, Toyomi-Cho, Chuo-ku  
Tel: +81-3-6220-1260  
Fax: +81-3-6220-1460  
Email: [kani@maruha-nichiro.co.jp](mailto:kani@maruha-nichiro.co.jp)

Tsutomu Tom NISHIDA  
Associate Scientist  
National Research Institute of Far Seas Fisheries  
5-7-1, Orido, Shimizu-Ward, Shizuoka-City,  
Shizuoka, Japan, 424-8633  
Tel/Fax: +81-54-336-6052  
Email: [tnishida@affrc.go.jp](mailto:tnishida@affrc.go.jp)

Kimiyoshi HIWATARI  
Technical Officer  
International Affairs Division  
Fisheries Agency of Japan  
2-2-1, Kasumigaseki-ku, Tokyo  
Japan, 100-8907  
Tel: +81-3-3502-8460  
Fax: +81-3-3504-2649

Email: [kimiyoshi\\_hiwatari@nm.maff.go.jp](mailto:kimiyoshi_hiwatari@nm.maff.go.jp)

Antonio MANSINHO  
Managing Director  
AMSTAI (Pty) Ltd  
P.O.Box 49  
Walvis Bay, Namibia  
Tel: +264-64-206294/95  
Fax: +264-64-206207  
Email: [tony@namibnet.com](mailto:tony@namibnet.com)

Naomisa MIYAGAWA  
TAIYO  
Tel: 0811296294  
Email: [taiyoct@mweb.co.za](mailto:taiyoct@mweb.co.za)

Toshihiro Hasegawa  
TAIYO  
Tel: 27 83-321-3397  
Email: [taiyoct@mweb.co.za](mailto:taiyoct@mweb.co.za)

#### **REPUBLIC OF KOREA**

Chungmo JUNG (Head of Delegation)  
Ministry of Oceans and Fisheries  
Government Complex Sejong, 94 Dasom 2-Ro,  
Sejong Special Self-governing City 339-012  
Republic of Korea  
Tel: +82-44-200-5371  
Mobile: +82-10-7728-2908  
Fax: +82-44-200-5379  
Email: [jamesjung@korea.kr](mailto:jamesjung@korea.kr)

-  
Kunwoong JI  
Assistant Manager  
Overseas Business DEPT  
Insung Corporation  
Insung Building, 113-2  
Hannau – Dong, Youngsan-Go  
Seoul, KOREA  
Tel: 82-9375 8104



Email: [kunwoong.ji@gmail.com](mailto:kunwoong.ji@gmail.com)

Jiwon YOON  
Ministry of Oceans and Fisheries  
Korea overseas Fisheries Cooperation Institute  
Level3, KT&G Building, Munyero 137,  
Seogu, Daejeon, Republic of Korea  
Tel: +82 42 471 6433  
Mobile: 82 10 2106 7555  
Fax: 82 42 471 6427  
Email: [jiwoon.yoon@kofci.org](mailto:jiwoon.yoon@kofci.org)

### **NAMIBIA**

Titus ILENDE (Head of Delegation)  
Deputy Director: Resource Management  
Ministry of Fisheries and Marine Resources  
Private Bag 13355  
Windhoek, Namibia  
Tel: +264-61-205-3071  
Fax: +264-61-220-558  
Email: [tiilende@mfmr.gov.na](mailto:tiilende@mfmr.gov.na)

Graca BAULETH D'ALMEIDA  
Director-Resource Management  
Ministry of Fisheries and Marine Resources  
Private Bag 13355  
Windhoek, Namibia  
Tel: +264-061-205-3114  
Fax: +264-061-205-558  
Email: [gdalmeida@mfmr.gov.na](mailto:gdalmeida@mfmr.gov.na)

Bony AMUTSE  
Deputy Director: Operations-MCS  
Ministry of Fisheries and Marine Resources  
Private Bag 13355  
Windhoek, Namibia  
Tel: +264-61-205-3013  
Mobile: 0811287921  
Fax: +264-61-205-204-412  
Email: [bamutse@mfmr.gov.na](mailto:bamutse@mfmr.gov.na)

Stanley NDARA  
Control Fisheries Inspector: Operations  
Ministry of Fisheries and Marine Resources  
P.O. Box 1594  
Walvis Bay, Namibia  
Phone: +264-64-201-6250  
Fax: +264-64-2016-228  
Email: [sndara@mfmr.gov.na](mailto:sndara@mfmr.gov.na)

Paul KAINGE  
Chief Fisheries Biologist: Resource Management  
Ministry of Fisheries and Marine Resources  
Private Bag 912  
Swakopmund, Namibia  
Tel: +264-064-4101127  
Fax: +264-64-404385  
Email: [pkainge@mfmr.gov.na](mailto:pkainge@mfmr.gov.na)

Beau TJIZOO  
Chief Fisheries Biologist: Resource Management  
Ministry of Fisheries and Marine Resources  
Private Bag 912  
Swakopmund, Namibia  
Tel: +264-64-4101159  
Fax: +264-64-404385  
Email: [btjizoo@mfmr.gov.na](mailto:btjizoo@mfmr.gov.na)

Martha Mutilifa- Haufiku  
Fisheries Observer Agency  
Walvis Bay, Namibia  
Tel: 264 64 219 500  
Fax: 264 64 219 548  
Email: [mmutilifa@foa.com.na](mailto:mmutilifa@foa.com.na)

Elwin KRUGER  
Fisheries Observer Agency  
Walvis Bay, Namibia  
Cell: 081 1229346  
Fax: 264 64 203 658

Email: [ekruger@foa.com.na](mailto:ekruger@foa.com.na)

## **NORWAY**

Terje LOBACH (Head of Delegation)

Senior Legal Adviser

Directorate of Fisheries

P.O. Box 2009, Nordney

5817 Bergen

Phone: +47-90835495

Fax: +47 55238090

Email: [terje.lobach@fiskeridir.no](mailto:terje.lobach@fiskeridir.no)

Odd Aksel BERGSTAD

Institute of Marine Research

Tel: +47-37059019

Fax: +47-22249580

Email: [oddaksel@imr.no](mailto:oddaksel@imr.no)

Kristoffer Krohg BJORLUND

Ministry of Trade, Industry and Fisheries

Tel: +22 24 63 23

Fax: +47-22 24 95 85

Email: [Kristoffer-Krohg.Bjorklund@fkf.dep.no](mailto:Kristoffer-Krohg.Bjorklund@fkf.dep.no)

## **REPUBLIC OF SOUTH AFRICA**

Saasa Pheeha (Head of Delegation)

Agriculture, Forestry & Fisheries

Private Bag X2

Roggebaai, 8012,

CAPE TOWN

Email: [SaasaP@daff.gov.za](mailto:SaasaP@daff.gov.za)

## **USA**

John O'Brien

202.647.3228

Office of the Marine Conservation

Bureau of Oceans and International

Environmental and Scientific Affairs

U.S. Department of State

Tel: +1 202 262 6993

Email: [O'BrienJB@state.gov](mailto:O'BrienJB@state.gov)

## **Secretariat**

Ben van ZYL

Executive Secretary

NATMIRC, Strand Street No.1

P.O.Box 4862, Vineta, Swakopmund,

NAMIBIA

Phone: +264-64-406885

Fax: +264-64-406884

Email: [bvanzyl@seafo.org](mailto:bvanzyl@seafo.org)

George CAMPANIS

Data Manager

NATMIRC, Strand Street No.1

P.O.Box 4862, Vineta, Swakopmund,

NAMIBIA

Phone: +264-64-406885

Fax: +264-64-406884

Email: [gcompanis@seafo.org](mailto:gcompanis@seafo.org)

Anna SNYDERS

Administrative Officer

NATMIRC, Strand Street No.1

P.O.Box 4862, Vineta, Swakopmund,

NAMIBIA

Phone: +264-64-406885

Fax: +264-64-406884

Email: [asnnyders@seafo.org](mailto:asnnyders@seafo.org)

Iyana DOMROGH

NATMIRC, Strand Street No.1

P.O.Box 4862, Vineta, Swakopmund,

NAMIBIA

Phone: +264-64-406885

Fax: +264-64-406884

Email: [ijanadomrogh@gmail.com](mailto:ijanadomrogh@gmail.com)

**INTERPRETER**

J. A. DOS SANTOS  
Lingua Consultancy Service  
Windhoek, Namibia

Phone: +264 61 301032

Fax: +264 88622209

Email: [jerrydos.santos@gmail.com](mailto:jerrydos.santos@gmail.com)

## ANNEX II

### IUU Vessel list 2014

<u>IMO Number</u>	<u>Vessel Name</u>	Previous Names	<u>Current flag and previous flag in brackets</u>	<u>Current I RCS</u>	Summary of activities	Operator and previous operator in brackets	IUU-listing Organizations	IUU Listing Dates
7306570	Alboran II	1. White Enterprise 2. Enxembre 3. Atalaya 4. Reda IV 5. Atalaya del Sur	Unknown (1. Panama (2. St. Kitts & Nevis)	Unknown	Gibraltar (31 March 2009)		NEAFC NAFO	2009
7424891	Aldabra			5VAA2	- Fishing inside Division 58.4.1b	- Cecibell Securities - Farway Shipping	CCAMLR	2007
7036345	Amorinn			5VAN9	Inside Division 5 8.4.2	- InfitcoLtd (Ocean Star Maritime CO)	CCAMLR	2003
6622642	Challenge			HO5381	Inside Division 5 8.4.3b Inside Division 5 8.4.3b Inside Division 5 8.4.3b Inside Division 5 8.4.3b	- Prion Ltd (- Vidal Armdores S.A. - Mar de Neptuno SA - Advantage Company SA	CCAMLR	2006

			8.4.3b	- Argibay Perez.J. A)		
7322897	Chang Bai	5IM877	Sighted 58.5.2 (3 1 Jan 2004)	- Navalmar S.A.	CCAMLR	2003
			Sighted 58.5.1 (1 0 May 2006)	- Vidal Armadores S.A.		
			Sighted 58.4.1 (2 1 Jan 2010)	- Meteora Develop ment Inc		
			Sighted 58.4.1 (1 3 Feb 2011)	- Rajan Corporatio n		
			Towing Baiyangdi an 57 (01 Apr 2 012)	- Rep Line Ventur es S.A. - Stanley Manage ment Inc		
			Sighted 58.6 (01 Jul 2012)			
			Sighted 58.4.2 (2 8 Jan 2013)			
			Sighted 57 (10 M ar 2013)			
			Fishing 58.5.1 (1 3 May 2013)			
			Sighted 57 (07 S ep 2013)			
			Sighted 57 (30 M ar 2014)			
			Sighted 57 (14 A pr 2014)			
9042001	Chengdu	5IM403	Undocumented la nding Malaysia (01 Aug 2004)	- Viarsa Fishing C ompany / Navalmar S.A.	CCAMLR	2004
			Fishing 58.4.3a (22 Feb 2005)	- Global Interc ontinental Serv ices		
			Fishing 58.4.3a (	- Rajan Corpor		

28 Apr 2005) ation  
 Fishing 58.4.3b ( - Redlines Vent  
 16 Dec 2005) ures SA  
 Fishing 58.4.3b ( )  
 01 Jul 2009)  
 Fishing 58.4.2 (2  
 7 Jan 2010)  
 Fishing 58.4.3b ( )  
 04 Apr 2010)  
 Fishing 58.4.1 (1  
 3 Feb 2011)  
 Sighted 57 (16 M  
 ay 2012)  
 Sighted 57 (20 O  
 ct 2012)  
 Sighted 57 (28 M  
 ay 2013)  
 Sighted 57 (01 J  
 ul 2013)  
 Sighted 57 (13 M  
 ay 2014)

8604668	Eros Dos	Furabolos	Unknown (1. Panama 2. Seychelles)	Unknown	St. Eugenia de Ribeira, Spain (0 5 March 2009)		NAFO	2009
7020126	Good Hope	2. Toto	Nigeria (1. Belize)	5NMU	- Resupplying in Area 51 - Port Plus Ltd	- Sharks Investm ents AVV	CCAMLR	2007
6714919/ 6719419	Gorilero	Gran Sol	Unknown	Unknown	La Coruna, Spai n (September 2 007)		NEAFC NAFO	2007
7322926	Heavy Sea			3ENF8	Inside Division 5 8.5.1	- C&S Fisheries S. A.	CCAMLR	2004

Inside Division 5  
7 - Muner SA  
- Meteroros Shipping  
- Meteora Shipping Inc.  
- Barroso Fish S. A.

7332218	Iannis I	Unknown	Unknown (Panama)	HO3374	Indian Ocean		NEAFC NAFO	2007
6803961	Itziar II			5NTV3	Undocumented landing Singapore (24 Sep 2002) Fishing 58.4.3b (22 Apr 2004) Sighted 58.4.3b (02 Jul 2006) Sighted 58.4.3b (24 Nov 2006) Sighted 58.4.3b (25 Jan 2007) Sighted 58.4.3b (07 Jan 2008) Fishing 58.5.1 (28 Feb 2008) Sighted 58.5.1 (01 Apr 2008) Sighted 88.2 (16 Dec 2009)	- Monteco Shipping - Transglobe Investments Ltd - Capensis	CCAMLR	2003
7905443	Koosha 4		Iran, Islamic Republic of	9BQK	Inside Division 5 8.4.1 (20 Jan 2011) Inside Division 5	Pars Paya Seyd Industrial Fish (Iran)	CCAMLR	2011

				8.4.1 (15 Feb 2011)				
9037537	Lana		Nigeria	5NVA	Fishing 58.4.1 (19 Mar 2007) Sighted 88.1 (15 Jan 2008) Sighted 57 (19 Dec 2010) Sighted 57 (05 Oct 2012) Sighted 57 (24 Mar 2013) Sighted 57 (03 Sep 2013) Sighted 57 (19 Nov 2013) Sighted 57 (14 Feb 2014)	- Punta Brava Fishing S.A. - Vero Shipping Corporation	CCAMLR	2007
7388267	Limpopo				Fishing 58.5.2 (21 Sep 2003) Sighted 58.5.1 (03 Dec 2003) Fishing 58.4.3b (23 Feb 2005) Fishing 58.4.3b (14 Dec 2005) Sighted 58.4.3b (25 Jan 2007)	- Grupo Oya Perez (Kang Brothers) - Lena Enterprises Ltd - Alos Company Ghana Ltd	CCAMLR	2003
7325746	Maine	1. Guinespa I 2. Maposa Novery	Guinea Conakry	3XL2	NEAFC Regulatory Area (29 Oct 2007)		NEAFC NAFO	2007



no				007)			
7385174	Murtosa	Unknown (Togol)	Unknown		Aveiro, Portugal (since 2005)	NEAFC NAFO	2005
9319856	Nihewan		5IM284	Supporting activities of IUU vessels 51 (16 May 2008) Sighted 58.4.3b (22 Apr 2009) Sighted 57 (07 Dec 2009) Fishing 58.4.1 (07 Apr 2010) Sighted 58.4.1 (29 Jan 2012) Sighted 58.4.1 (30 Jan 2012) Sighted 58.4.1 (31 Jan 2012) Sighted 57 (24 Apr 2012) Fishing 58.6 (03 Jul 2012) Sighted 57 (28 May 2013) Sighted 57 (04 Jul 2013) Sighted 57 (13 May 2014)	- Mabenal S.A. - Gongala Fishing Joint - Omunkete Fishing Pty Ltd - Eastern Holdings Ltd	CCAMLR	2008
5062479	Perlon	Nigeria	5NTV21	Sighted 58.5.1 (03 Dec 2002) Sighted 58.5.1 (0	- Vakin S.A. - Jose Lorenzo SL - Americagalaica S.A.	CCAMLR	2003

4 Jun 2003)  
 Sighted 58.4.2 (2  
 2 Jan 2004)  
 Sighted 58.4.3b (  
 11 Dec 2005)  
 Fishing 58.4.1 (2  
 6 Jan 2006)  
 Sighted 58.4.3b (  
 07 Dec 2006)  
 Sighted 58.4.1 (3  
 0 Dec 2006)  
 Sighted 58.4.1 (1  
 6 Dec 2008)  
 Gear sighted (10  
 Feb 2009)  
 Fishing 58.5.1 (0  
 8 Jun 2010)  
 Sighted 51 (10 F  
 eb 2012)  
 Sighted 57 (20 J  
 ul 2014)

6607666	Ray	1 Killy. 2. Tropic 3. Isla Graciosa 4. Constant	Belize (1. South Africa 2. Equatorial Guinea 3. Mongolia)	V3RB2	Fishing 58.4.3b (23 May 2006) CCAMLR Fishing 58.4.2 (18 Feb 2007) CCAMLR Fishing 58.4.3b (24 Mar 2007) CAML Fishing 58.4.3b (12 Jan 2008)	- Arniston Fish Processors (Pty) Ltd - Vidal Armadores S.A. - Nalanza S.A. - Argibay Perez J. A. - Belfast Global S. A.	CCAMLR SEAFO	2006 2012
---------	-----	--	---	-------	---	---	-----------------	--------------

Fishing 58.4.3b (09 Jan 2009)

Fishing 58.4.3b (20 Jan 2009)

Fishing inside Division A (2012) SEAFO

6818930	Tchaw			Fishing 58.4.3b (25 Feb 2005)	- Arcosmar Fisheries Corporation	CCAMLR	2005
				Fishing 58.4.4a (02 Aug 2005)	- JMS Lopez - Premier Business		
				Sighted 58.4.3b (11 Dec 2005)	- His-To Company Ltd		
				Fishing 58.4.2 (01 Feb 2006)	- Jose Manuel Salgueiro		
				Fishing 58.4.3b (14 Mar 2007)			
6905408	Thunder	Nigeria	5NTV	Fishing 58.4.2 (05 Feb 2006)	- Southern Shipping Ltd	CCAMLR	2006
				Sighted 58.4.3b (08 Dec 2006)	- Estellares S.A. - Felicite Shipping Corporation		
				Sighted 58.4.2 (29 Dec 2006)	- Canela Shipping Limited		
				Fishing 58.5.1 (29 Apr 2007)	- Trancoeiro Fishing S.A.		
				Fishing 58.4.2 (04 Oct 2008)	- Royal Marine and Spare Nig. Limited		
				Sighted 58.4.3b (03 May 2009)			
				Sighted 58.4.3b (04 Dec 2009)			
				Fishing 58.4.2 (2			

5 Jan 2010)  
 Fishing 58.4.2 (19 Feb 2010)  
 Sighted 58.4.1 (16 Dec 2010)  
 Sighted 57 (17 Aug 2012)  
 Sighted 58.4.3b (13 Feb 2013)  
 Sighted 57 (15 Apr 2013)  
 Port Inspection (20 Apr 2013)  
 Fishing 58.6 (23 Aug 2013)  
 Sighted 57 (18 Sep 2013)  
 Sighted 57 (14 Apr 2014)

7905039	Tiantai				Sighted 58.4.1 (28 Jan 2012) Sighted 57 (01 Apr 2012) Sighted 57 (08 Feb 2013) Sighted 57 (24 Mar 2013)	Stanley Management Inc	CCAMLR	2012
7321374	Trinity	1. Yucutan Basin 2. Enxembre 3. Fonte Nova 4. Jawhara	Ghana (1.Panama 2. Marocco)	Unknown	Tema Ghana (2011)		NEAFC NAFO	2004

8713392	Viking	Nigeria	Supporting IUU activities of Thule 51 (05 Apr 2004)	- Manuel Martinez Cazenove International S.A.	CCAMLR	2004
			Fishing 58.4.3b (23 May 2006)	- Canela Shipping Ltd		
			Sighted 58.4.3b (02 Jul 2006)	- Canela Shipping Limited		
			Sighted 58.4.3b (16 Mar 2007)	- Trancoeiro Fishing S.A.		
			Sighted 58.5.1 (19 Jul 2007)			
			Sighted 58.5.1 (04 Apr 2008)			
			Sighted 58.4.4 (04 Apr 2011)			
			Sighted 57 (27 Jan 2012)			
			Sighted 51 (20 Apr 2012)			
			Sighted 57 (3 May 2013)			
			Sighted 57 (24 Oct 2013)			
			Sighted 58.7 (04 Dec 2013)			
			Fishing 48.6 (24 Jan 2014)			
			Sighted 57 (16 Mar 2014)			
			Sighted 57 (21 Mar 2014)			

**Annex 6 – The Standing Committee on Administration and Finance (SCAF) Report  
2014**

## **REPORT OF THE 6<sup>th</sup> ANNUAL MEETING OF THE STANDING COMMITTEE**

### **ON ADMINISTRATION AND FINANCE (SCAF)**

Windhoek, Namibia 01 to 05 December 2014

#### **1. Opening of the meeting**

The Chairperson, Ms. D`Almeida, from Namibia, opened the meeting and welcomed all delegates.

#### **2. Appointment of Rapporteur**

Mr. Stanley Ndara from the Ministry of Fisheries and Marine Resources (Namibia) volunteered to take minutes and all Contracting Parties agreed.

#### **3. Adoption of agenda and meeting arrangements**

The agenda was adopted without any additions or alterations.

#### **4. Introduction of Parties Delegation**

The Heads of Delegations introduced their members.

- 4-1.1. Angola - Dr. Dielobaka Ndombele and Mr. Domingos Azevedo
- 4-1.2. Japan – Mr. Hyroe Suzuki, Mr. Masanori Wada and Mr. Yasuhito Ueda
- 4-1.3. EU – Mr. Orlando Fachada
- 4-1.4. Oorea – Mr. Chungmo Jung and Ms. Jiwon Yoon
- 4-1.5. Namibia – Mr. Titus Iilende and Mr. Beau Tjizoo
- 4-1.6. Norway – Mr. Kristoffer Bjorklund
- 4-1.7. South Africa - Mr. Saasa Pheeha

#### **5. 2014 Audit Report**

The Executive Secretary presented the 2013 audit report and it was explained that the Secretariat had prepared all that was required and in accordance with international auditing standards. SCAF has noted that the audit report is unqualified.

#### **6. Executive Secretary's Report on Administration and Finance**

The Secretariat presented an overview of the Administration and Finance Report. Reflecting on the finances of the Commission, the Executive Secretary pointed out that all activities for the period under review were addressed. Furthermore, attention was called to an audit report of the budget by PricewaterhouseCoopers, which did not identify any irregularities nor any further matters to address.

The Executive Secretary reported that all Contracting Parties had made their contributions at the time of the compilation of the 2014 Administrative and Finance report with the exception of Namibia. However, the Secretariat pointed out that as of recent Namibia had paid their dues. The Secretariat further pointed out that some CP`s have over-paid their contributions whilst others have under-paid. These differences will be calculated and the Contracting Parties shall be informed accordingly when their next contributions are due. Korea raised a

concern that they were under the impression that they had paid their contributions in full and wanted to know the cause of the discrepancies. The Secretariat and Korea were tasked to investigate this disparity.

The Executive Secretary reported that Secretariat staff performed exceptionally well and requested for a 5% compensatory salary increase based on performance and a further 6.1% increase based on cost of living. He furthermore requested an additional 5% increase for the Data Manager based on additional duties to be performed. After deliberations, the Committee resolved on a 5% increase to the Database Manager. For all staff members the Committee resolved on an increment of 5.6%, based on the inflation rate in Namibia in 2013. The Committee has noted that the budget may increase if the requests made by the SC and the Compliance Committee for additional funding as well as costs of the Performance Review are approved by the Commission. The Executive Secretary adjusted the budget accordingly.

#### **7. Approval of the proposed 2015 budget and 2016 forecast budget**

The Executive Secretary presented the proposed 2015 budget and indicated that most votes were adjusted with 10% from 2014 budget allocation, except where reflected in the corresponding budget. The Committee reviewed the budget proposed by the Secretariat and adopted a draft budget for consideration by the Commission (Annex II).

#### **8. Contributions by Parties**

Contributions by parties were calculated based on the formula adopted in the 2009 Commission meeting. All parties agreed to the amounts as it matched all Contracting Parties budgetary provisions (Annex III).

#### **9. Proposal of new auditors**

The Executive Secretary informed the Committee that only one proposal was received and presented the proposal from PricewaterhouseCoopers. The Committee was concerned that only one proposal was received, but given the circumstances, agreed to recommend with the continuation of PricewaterhouseCoopers as auditors. The Secretariat was reminded to encourage other auditing firms to apply in the future.

#### **10. Any other matters**

None

#### **11. Election of Chair and Vice Chairpersons**

The Committee applied the rule of alphabetic rotation. Norway and Japan agreed to take up the Chairperson and Vice Chairperson positions, respectively. Norway will communicate the name of the Chairperson at a later stage. The outgoing Chairpersons and delegations both expressed their gratitude and satisfaction with the conduct and proceedings of SCAF over the past 4 (four) years.

#### **12. Adoption of the SCAF report**

The Committee reviewed and adopted the report.

#### **13. Venue and date of next meeting**

The Committee noted that the venue and date of the next meeting will be decided by the Commission.



#### **14. Closure of meeting**

The Chairperson closed the meeting on the 02<sup>nd</sup> December 2014 in good faith at around 18h31.

## ANNEX 1

## LIST OF DELEGATES SCAF

### CHAIRPERSON

Graca BAULETH D'ALMEIDA  
Director:Resource Management  
Ministry of Fisheries and Marine Resources  
Private Bag 13355  
Windhoek, Namibia  
Tel: +264-061-205-3114  
Fax: +264-061-205-558  
Email: [gdalmeida@mfmr.gov.na](mailto:gdalmeida@mfmr.gov.na)

### ANGOLA

Dr. Dielobaka NBOMBELE (Head of Delegation)  
Cabinete De Intercambio Internaacional  
Ministerio Das Pescas  
Ministry of Fisheries  
P. O. Box 83  
Avenida 4 Fevereiro N:30, Edificio Atlantico  
Phone: +24 49 23 333 663  
Fax: +244 22 230 9731  
Email: [dielobaka@gmail.com](mailto:dielobaka@gmail.com)

Domingos AZEVEDO  
Servico Nacional De Fiscalizacao Pesque  
Ira E Da Aquicultura  
Ministerio Das Pescas  
Ministry of Fisheries, P.O.Box 2601  
Avenida 4 Fevereiro N:30, Edificio Atlantico  
Phone: +24 49 23 340 100  
Fax: +24 42 22 309 731  
Email: [domingosazevedo2001@yahoo.com](mailto:domingosazevedo2001@yahoo.com)

### EUROPEAN UNION

Orlando FACHADA (Head of Delegation)  
DG Fisheries and Maritime Affairs  
External Policy and International and  
Regional Arrangements  
European Union  
Rue Josseph 11,99  
B-1049 Brussels, Belgium  
Tel: 32-2-299-0857  
Fax: 32-2-295-5700  
Email: Orlando.[Fachada@ec.europa.eu](mailto:Fachada@ec.europa.eu)

### JAPAN

Hyoë SUZUKI  
Fisheries Agency of Japan  
1-2-1 Kasumigaseki Chiyoda-ku  
Tokyo, Japan  
Tel: +81 3 3502 8460  
Fax: +81 90 2629 9584  
Email: [hyoe\\_suzuki@nm.maff.go.jp](mailto:hyoe_suzuki@nm.maff.go.jp)

Masanori WADA  
Ministry of Foreign Affairs

2-2-1- Kasumigaseki Chiyoda-ku  
Tokyo, Japan  
Tel: +81 3-5501 8338  
Fax: +81 3 5501 8332  
Email: [Masanori.wada@mofa.go.jp](mailto:Masanori.wada@mofa.go.jp)

Yasuhito UEDA  
Fisheries Agency of Japan  
1-1-1 Kasumigaseki Chiyoda-ku  
Tokyo, Japan  
Tel: 81 3 3502 8460  
Fax: 81 3 3504 2649  
Email: [yasuhito\\_ueda@nm.maff.go.jp](mailto:yasuhito_ueda@nm.maff.go.jp)

### REPUBLIC OF KOREA

Chungmo JUNG (Head of Delegation)  
Ministry of Oceans and Fisheries  
Government Complex Sejong, 94 Dasom 2-Ro,  
Sejong Special Self-governing City 339-012  
Republic of Korea  
Tel: +82-44-200-5371  
Mobile: -82-10-7728-2908  
Fax: +82-44-200-5379  
Email: [jamesjung@korea.kr](mailto:jamesjung@korea.kr)

Jiwoon YOON  
Ministry of Oceans and Fisheries  
Korea Overseas Fisheries Cooperation Institute  
Level3, KT&G Building, Munyero 137,  
Seogu, Daejeon, Republic of Korea  
Tel: +82 42 471 6433  
Mobile: +82 10 2106 7555  
Fax: +82 42 471 6427  
Email: [jiwoon.yoon@kofci.org](mailto:jiwoon.yoon@kofci.org)

### NAMIBIA

Titus IILENDE (Head of Delegation)  
Deputy Director: Resource Management  
Ministry of Fisheries and Marine Resources  
Private Bag 13355  
Windhoek, Namibia  
Phone: +264-61-205-3071  
Fax: +264-61-220-558  
Email: [tiilende@mfmr.gov.na](mailto:tiilende@mfmr.gov.na)

Beau TJIZOO  
Chief Fisheries Biologist: Resource Management  
Ministry of Fisheries and Marine Resources  
Private Bag 912  
Swakopmund, Namibia  
Tel: +264-64-4101159  
Fax: +264-64-404385  
Email: [btjizoo@mfmr.gov.na](mailto:btjizoo@mfmr.gov.na)

**NORWAY**

Kristoffer Krohg BJORLUND  
Ministry of Trade, Industry and Fisheries  
Tel: +22 24 63 23  
Fax: +47-22 24 95 85  
Email: [Kristoffer-Krohg.Bjorklund@fkf.dep.no](mailto:Kristoffer-Krohg.Bjorklund@fkf.dep.no)

**REPUBLIC OF SOUTH AFRICA**

Saasa Pheeha (Head of Delegation)  
Agriculture, Forestry & Fisheries  
Private Bag X2  
Roggebaai, 8012,  
CAPE TOWN  
Email: [SaasaP@daff.gov.za](mailto:SaasaP@daff.gov.za)

**SECRETARIAT & SUPPORTING STAFF**

Ben van ZYL  
Executive Secretary  
NATMIRC, Strand Street No.1  
P.O.Box 4862, Vineta, Swakopmund,  
NAMIBIA  
Phone: +264-64-406885  
Fax: +264-64-406884  
Email: [bvanzyl@seafo.org](mailto:bvanzyl@seafo.org)

Anna SNYDERS  
Administrative Officer  
NATMIRC, Strand Street No.1  
P.O.Box 4862, Vineta, Swakopmund,  
NAMIBIA  
Phone: +264-64-406885  
Fax: +264-64-406884  
Email: [asnyders@seafo.org](mailto:asnyders@seafo.org)

**RAPPORTEUR**

Stanley NDARA  
Control Fisheries Inspector: Operations  
Ministry of Fisheries and Marine Resources  
P.O. Box 1594  
Walvis Bay, Namibia  
Phone: +264-64-201-6250  
Fax: +264-64-2016-228  
Email: [sndara@mfmr.gov.na](mailto:sndara@mfmr.gov.na)

**INTERPRETER**

J. A. DOS SANTOS  
Lingua Consultancy Service  
Windhoek, Namibia  
Phone: +264 61 301032  
Fax: +264 88622209  
Email: [jerrydos.santos@gmail.co](mailto:jerrydos.santos@gmail.co)

# Annex II

## REVIEW 2014 BUDGET AND PROVISIONAL 2015 BUDGET and 2016 FORECAST BUDGET

Inflation  
Adjustment

0.1

Budgetline	Activity description	Allocation	Expenditure	% spending	Allocation	% increase	Forecast
		2014	2014		2015		2016
<b>Staff Costs</b>							
4400/001	Salaries Paid Cash	1,851,459.00	1,853,771.86	100.12	<a href="#">1,995,759.26</a>	7.79	2,217,288.54
4400/002	P.A.Y.E.	351,300.50	317,158.93	90.28	<a href="#">326,959.24</a>	-6.93	359,655.16
4400/003	Social Security	3,888.00	4,248.60	109.27	3,888.00	0.00	3,888.00
	<b>Sub Total</b>	<b>2,206,409.03</b>	<b>2,175,179.39</b>	<b>98.58</b>	<b>2,326,606.50</b>	<b>5.45</b>	<b>2,580,831.70</b>
4410/004	Car Allowance	25,429.60	21,190.00	83.33	26,853.66	5.60	28,357.46
	<b>Total</b>	<b>2,231,838.63</b>	<b>2,196,369.39</b>	<b>98.41</b>	<b>2,353,460.16</b>	<b>5.45</b>	<b>2,609,189.16</b>
<b>Temporary Staffing</b>							
3100/000	Consultant	0.00	0.00	0.00	0.00	0.00	0.00
4700/000	Wages - Casual	46,000.00	41,858.83	91.00	48,576.00	5.60	51,296.26
	<b>Sub Total</b>	<b>46,000.00</b>	<b>41,858.83</b>	<b>91.00</b>	<b>48,576.00</b>	<b>5.60</b>	<b>51,296.26</b>
<b>Employee Benefits</b>							
9400/001	Installation Grant	93,750.00	0.00	0.00	<a href="#">61,118.53</a>		61,118.53
9400/002	Removal Expenses	93,750.00	0.00	0.00	<a href="#">29,133.58</a>		29,133.58
	Repatriation Removal Expenses				<a href="#">91,429.85</a>		91,429.85
9400/003	Expenses	93,750.00	0.00	0.00			
9400/004	Home Leave - Travel	93,750.00	159,508.50	170.14	<a href="#">35,766.12</a>		35,766.12
9400/005	External Travel	93,750.00	0.00	0.00	<a href="#">15,651.55</a>		15,651.55
9400/006	Leave Pay Provision	93,750.00	0.00	0.00	<a href="#">86,161.01</a>		86,161.01
9400/007	Severance Pay Provision	93,750.00	0.00	0.00	<a href="#">211,927.58</a>		211,927.58
9400/008	Mortality Allowance	93,750.00	0.00	0.00	<a href="#">218,811.78</a>		218,811.78
	<b>Total</b>	<b>750,000.00</b>	<b>159,508.50</b>	<b>21.27</b>	<b>750,000.00</b>		<b>750,000.00</b>
<b>Operational Expenses</b>							
3000/000	Accounting Fees	62,000.00	56,517.12	91.16	49,163.00	-20.70	54,079.30
3050/000	Advertising & Promotions	13,000.00	11,935.30	91.81	14,300.00	10.00	15,730.00
3200/000	Bank Charges	13,200.00	7,169.66	54.32	14,520.00	10.00	15,972.00
3330/000	Overtime	5,000.00	0.00	0.00	5,500.00	10.00	6,050.00
3355/000	Contingency	8,900.00	11,523.91	129.48	9,790.00	10.00	9,790.00
3400/000	Courier & Postage	2,000.00	4,847.05	242.35	2,200.00	10.00	2,200.00
3700/000	Entertainment	6,500.00	3,109.50	47.84	7,150.00	10.00	7,865.00
3850/000	Insurance	17,700.00	16,248.85	91.80	19,470.00	10.00	21,417.00
4200/000	Stationary	8,900.00	11,614.15	130.50	9,790.00	10.00	10,769.00
4500/000	Office expenses	5,830.00	5,024.73	86.19	6,413.00	10.00	7,054.30
6300/000	Office Equipment	1,000.00	0.00	0.00	10,000.00	900.00	11,000.00
	<b>Total</b>	<b>144,030.00</b>	<b>127,990.27</b>	<b>88.86</b>	<b>148,296.00</b>	<b>2.96</b>	<b>161,926.60</b>
<b>Computer Services</b>							
3300/000	Computer Expenses	3,300.00	9,079.21	275.13	3,630.00	10.00	3,993.00
3301/000	Software	30,000.00	27,443.51	91.48	33,000.00	10.00	36,300.00
3302/000	Internet lease Line	50,000.00	56,189.47	112.38	55,000.00	10.00	60,500.00

3303/000	Rent - Domain Name	4,300.00	4,009.47	93.24	4,300.00	0.00	4,730.00
6250/010	Hardware	70,000.00	34,502.62	49.29	25,000.00	-64.29	27,500.00
	<b>Total</b>	<b>157,600.00</b>	<b>131,224.28</b>	<b>83.26</b>	<b>120,930.00</b>	<b>-23.27</b>	<b>133,023.00</b>

#### Fisheries Monitoring

3304/000	VMS - Related Costs	0.00	0.00	0.00	0.00		0.00
	<b>Total</b>	<b>0.00</b>	<b>0.00</b>	<b>0.00</b>	<b>0.00</b>		<b>0.00</b>

#### Training Secretariat Support

3320/000	Training	25,300.00	21,687.13	85.72	27,830.00	10.00	30,613.00
	<b>Total</b>	<b>25,300.00</b>	<b>21,687.13</b>	<b>85.72</b>	<b>27,830.00</b>	<b>10.00</b>	<b>30,613.00</b>

#### Performance Review

##### Perf. Review

<b>Total</b>					<b>150,000.00</b>		<b>150,000.00</b>
--------------	--	--	--	--	-------------------	--	-------------------

#### Printing

4051/000	Reports and Translation	54,000.00	33,687.19	62.38	59,400.00	10.00	65,340.00
4052/000	Printing	15,200.00	14,363.37	94.50	16,720.00	10.00	18,392.00
	<b>Total</b>	<b>69,200.00</b>	<b>48,050.56</b>	<b>69.44</b>	<b>76,120.00</b>	<b>10.00</b>	<b>83,732.00</b>

#### Communication

4310/000	Rental & Maintenance Switchboard	13,200.00	7,518.44	56.96	14,520.00	10.00	15,972.00
4315/000	Maintenance Copier/Fax	10,300.00	7,799.39	75.72	11,330.00	10.00	12,463.00
4600/000	Telephone and Fax	67,600.00	59,000.84	87.28	74,360.00	10.00	81,796.00
	<b>Total</b>	<b>91,100.00</b>	<b>74,318.67</b>	<b>81.58</b>	<b>100,210.00</b>	<b>10.00</b>	<b>110,231.00</b>

#### Meetings

4070/000	Meetings & Conferences	313,500.00	175,864.59	56.10	344,850.00	10.00	379,335.00
4070/001	Meetings Flights	0.00	0.00	0.00	0.00	0.00	0.00
4070/002	Meetings Accommodation	110,000.00	152,930.00	139.03	121,000.00	10.00	133,100.00
4070/003	Meetings Road	20,000.00	23,578.04	117.89	22,000.00	10.00	24,200.00
	<b>Total</b>	<b>443,500.00</b>	<b>352,372.63</b>	<b>79.45</b>	<b>487,850.00</b>	<b>10.00</b>	<b>536,635.00</b>

#### Ad Hoc Meeting

4080/000	<b>FIRMS/CWP</b>	<b>0.00</b>	<b>0.00</b>	<b>0.00</b>	100,000.00		<b>0.00</b>
	<b>Total</b>	<b>0.00</b>	<b>0.00</b>	<b>0.00</b>	100,000.00		<b>0.00</b>

#### Other Travel

4650/000	Travel Flights	155,500.00	88,028.64	56.61	221,050.00	42.15	243,155.00
4651/000	Travel Accommodation	90,000.00	90,694.21	100.77	139,000.00	54.44	152,900.00
4652/000	Travel Road	48,800.00	31,623.94	64.80	53,680.00	10.00	59,048.00
	<b>Total</b>	<b>294,300.00</b>	<b>210,346.79</b>	<b>71.47</b>	<b>413,730.00</b>	<b>40.58</b>	<b>455,103.00</b>

#### Petty Cash

8300/000	Petty cash	8,300.00	0.00	0.00	9,130.00	10.00	10,043.00
	<b>Total</b>	<b>8,300.00</b>	<b>0.00</b>	<b>0.00</b>	<b>9,130.00</b>	<b>10.00</b>	<b>10,043.00</b>

<b>TOTAL EXPENDITURE</b>		<b>4,261,168.63</b>	<b>3,363,727.05</b>	<b>78.94</b>	<b>4,786,132.16</b>	<b>12.32</b>	<b>4,931,792.02</b>
--------------------------	--	---------------------	---------------------	--------------	---------------------	--------------	---------------------

INCOME	Contributions by Parties	<b>4,786,132.16</b>					
--------	--------------------------	---------------------	--	--	--	--	--

# Annex III

30% Countries sharing equal

\$ 205,119.95

60% shared on GDP

\$ 2,871,679.29 75% Developed Countries (EU, Japan, Korea, Norway)

\$ 538,439.87

25% Developing Countries (Angola, Namibia, South Africa)

\$ 239,306.61

10% Active Fishing Countries (Japan, Korea, Namibia, South Africa)

\$ 119,653.30

Angola	EU	Japan	Korea	Namibia	Norway	South Africa
\$ 444,426.56	\$ 743,559.82	\$ 863,213.12	\$ 863,213.12	\$ 564,079.86	\$ 743,559.82	\$ 564,079.86

Over, under payments and arrears

Angola	EU	Japan	Korea	Namibia	Norway	South Africa
\$ 44,306.90	\$ (993.28)	\$ (13,106.16)	\$ (58,730.33)	\$ -	\$ (15,552.14)	\$ (614.00)

Finale 2015 Contribution after reconciliation for over and under payments and arrears.

Angola	EU	Japan	Korea	Namibia	Norway	South Africa
\$ 400,119.66	\$ 744,553.10	\$ 876,319.28	\$ 921,943.45	\$ 564,079.86	\$ 759,111.96	\$ 564,693.86

Budget

4,786,132.16

## **Annex 7 – Japanese Exploratory Fishing Plan for 2015**

# PLAN OF EXPLORATORY FISHING IN NEW BOTTOM FISHING GROUND IN THE SEAFO CONVENTION AREA IN 2015

Member country: Japan

Date of submission: (original): SEPTEMBER, 2014

(Revised) DECEMBER, 2014

## 1. INTRODUCTION

In 2011, existing bottom fishing areas have been identified in response to 2006 UNGA resolution 61/105. This has resulted to split some of fishable sea mountains shallower than 2000m such as Discovery Seamounts into existing and new bottom fishing areas.

There is no clear geographical (seafloor-topological) boundary around Discovery Seamounts so it is considered that fish might move across the boundary of existing and new bottom fishing areas. Furthermore VME information, fish distribution, detailed sea bed map, etc. in new bottom fishing area will never be known unless fishing activities occur there.

We believe that collecting such primary information in new bottom fishing areas is meaningful and accumulating such information could contribute to achieve the objective of the SEAFO Convention to ensure the long term conservation and sustainable use of fishery resources.

## 2. OBJECTIVES

Under such circumstances, the primary objectives of this exploratory fishing are to investigate Patagonian toothfish resources using some part of TAC and to evaluate if this exploratory fishing produces Significant Adverse Impact (SAI) on VME species

## 3. SPECIFICATIONS OF THE EXPLORATORY FISHING

### (1) Target Species

*Dissosticus* spp. (Patagonian toothfish)

### (2) Period

Around March/2015 – August/2015 changeable due to fishing condition/plan

### (3) Areas (Box 1)

**Area (1) Discovery area (six 1°x1° areas)**

(41:00-42:00°S/ 01:00°W-00:00°), (42:00-43:00°S/ 01:00°W-00:00°),  
(42:00-43:00°S/ 00:00°-01:00°E), (43:00-44:00°S/ 00:00°-01:00°E),  
(43:00-44:00°S/ 01:00°W-00:00°), (41:00-42:00°S/ 02:00°-03:00°E)

**Area (2) Western area (two 1°x1° areas)**

(46:00-47:00°S/ 05:00W°-04:00°W), (46:00-47:00°S/ 06:00W°-05:00°W)

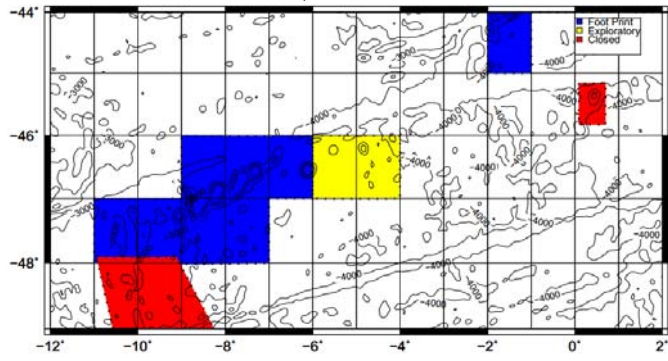
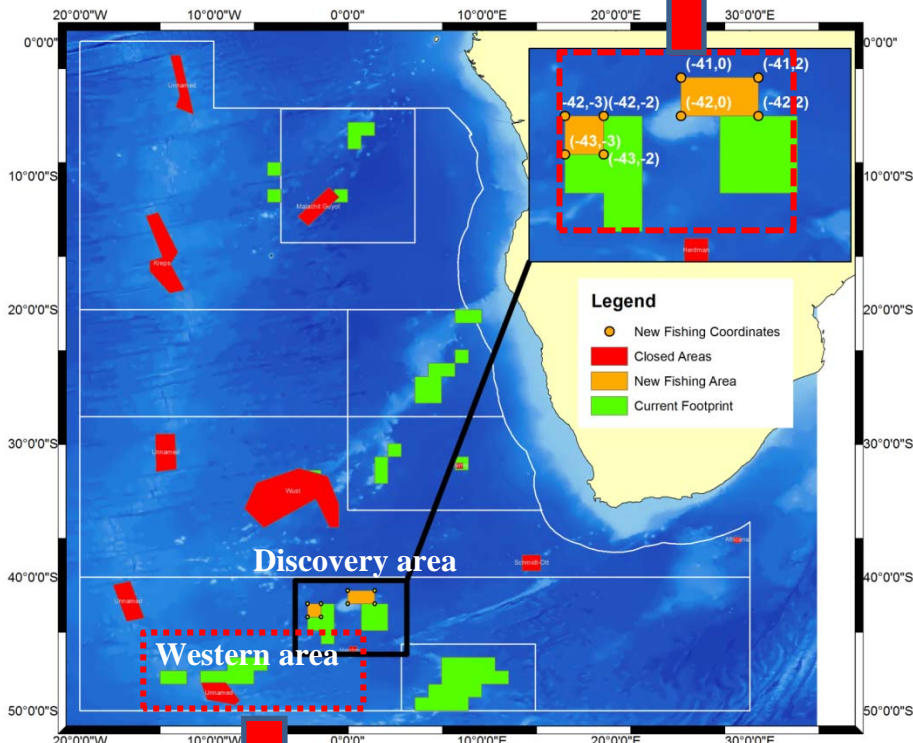
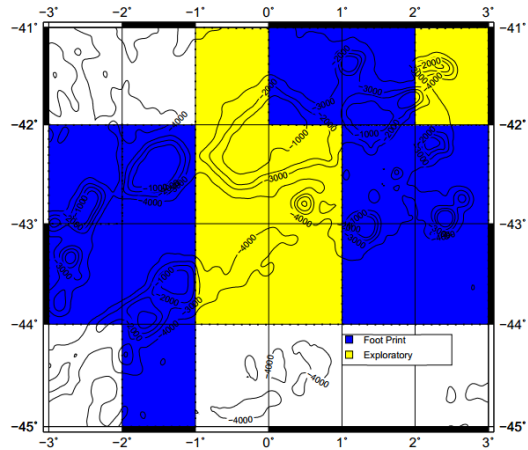


**BOX 1 Two exploratory fishing areas (2015)**

**Area (1) Discovery area (right)**

**Legend**

- Existing fishing areas
- Exploratory fishing areas



**Area (2) Western area (left)**

**Legend**

- Existing fishing areas
- Exploratory fishing areas
- Closed areas

#### **(4) Exploratory Bottom Fishing Protocol**

The exploratory fishing will fully comply Exploratory Bottom Fishing Protocol specified in Annex 3, 4 and 5 in Conservation measure 26/13.

#### **(5) Coverage (area to be surveyed)**

The exploratory fishing will be conducted by following 2 steps, **in order to cover as many as representative areas as possible in the fisherable zone, i.e., 2,000m or shallower waters.**

##### **Step 1**

On the first entry of the research area, the first 10 hauls shall be research hauls and must satisfy following criteria.

- Each research haul must be separated by not less than 3 NM from any other research haul, distance to be measured from the geographical mid-point of each research haul.
- Each haul shall comprise at least 3500 hooks and no more than 5000 hooks.
- Each haul shall have a soak time of not less than 6 hours, measured from the time of completion of the setting process to the beginning of the hauling process.

##### **Step 2**

On completion of 10 research hauls, the vessel will continue the exploratory fishing in order to cover as many as representative areas as possible in the fisherable zone, i.e., 2,000m or shallower waters.

#### **(6) Observer**

One observer will be assigned to collect necessary information described in this proposal, which will be reported to the SEAFO Secretariat and the Scientific Committee meeting in 2015.

#### **(7) Data collection**

The observer will collect the following data while the vessel is engaged in exploratory fishing. In the exploratory fishing, more scientific information is collected than in commercial fishing in order to fulfil requirements stated in the Exploratory Bottom Fishing Protocol (26/13) (Table 1)

- Patagonian tooth fish (*Dissosticus eiginoides*)
  - Total catch in weight/line
  - Length measurement / Maximum 50fish/line
  - Weight, sex, maturity, gonad state / Maximum 30fish/line

- Rattail (*Macrourid* spp.)
  - Total catch in weight/line
  - Length and weight measurement / Maximum 10pcs/line
- Other by-catch species
  - Total catch in weight/line by the lowest taxon possible

Table 1 Comparisons of data collection between exploratory fishing and commercial fishing.

Data collection				
Commercial fishing (Existing bottom fishing area)			Exploratory fishing (New bottom fishing area)	
Patagonian toothfish			Patagonian toothfish	
Type	Quatinty		Type	Quatinty
Total cathch weight / line			Total cathch weight / line	
Length	20 samples/line		Length	50 samples/line
Gonad stages	20 samples/line		Gonad stages	30 samples/line
Gonad weight	20 samples/line		Gonad weight	30 samples/line
Individual weight	20 samples/line		Individual weight	30 samples/line
Sex	20 samples/line		Sex	30 samples/line
Otoliths	5 samples/line		Otoliths	5 samples/line
Bycatch species			Rat tail	
Number of each speices / line			Total cathch weight / line	
			Length	10 samples/line
			Individual weight	10 samples/line
			Bycatch species excepted Rat tail	
			Number of each speices / line	

- VME

VME data according to interim VME data collection protocol set out in Annex 4 of Conservation Measure 26/13.

**(8) Mitigation plan to prevent significant adverse impact to VME species.**

The exploratory fishing will fully comply the encounter protocol stipulated in Annex 7 in Conservation measure 26/13, i.e.,

*3.2 If the quantity of VME element or indicator species caught in a fishing operation (such as trawl tow or set of longline or pots) is **beyond the thresholds** defined in paragraph 4 below, the following shall apply:*

*a. The vessel master shall **report the incident without delay** to its Contracting party, which shall forward the information to the Executive Secretary. The Executive Secretary shall archive the information and without delay transmit it to all Contracting Parties. The Contracting Parties shall issue an immediate alert to all vessels flying their flag.*

*b. The Executive Secretary shall at the same time request Contracting Parties to implement **an interim closure of 2 miles radius** around the reporting position. The reporting position is that provided by the vessel, either the endpoint of the tow/set or another position that the evidence suggests is closest to the exact encounter location.*

The vessel has been using Trot line fishing method in the Convention area. During the exploratory fishing in new bottom fishing area, the vessel will employ the same fishing method.

#### **Fishing gear configuration (Fig. 1)**

- 201 drop lines per standard main line of 9,000m (one drop line every 45m of main line).
- One drop line has 5 clusters with 5 snoods and hooks. = 25 hooks per drop line.
- Distance between clusters is about 40cm. Snood length is about 50cm.
- Distance between the bottom clusters to concrete weight is about 1m.

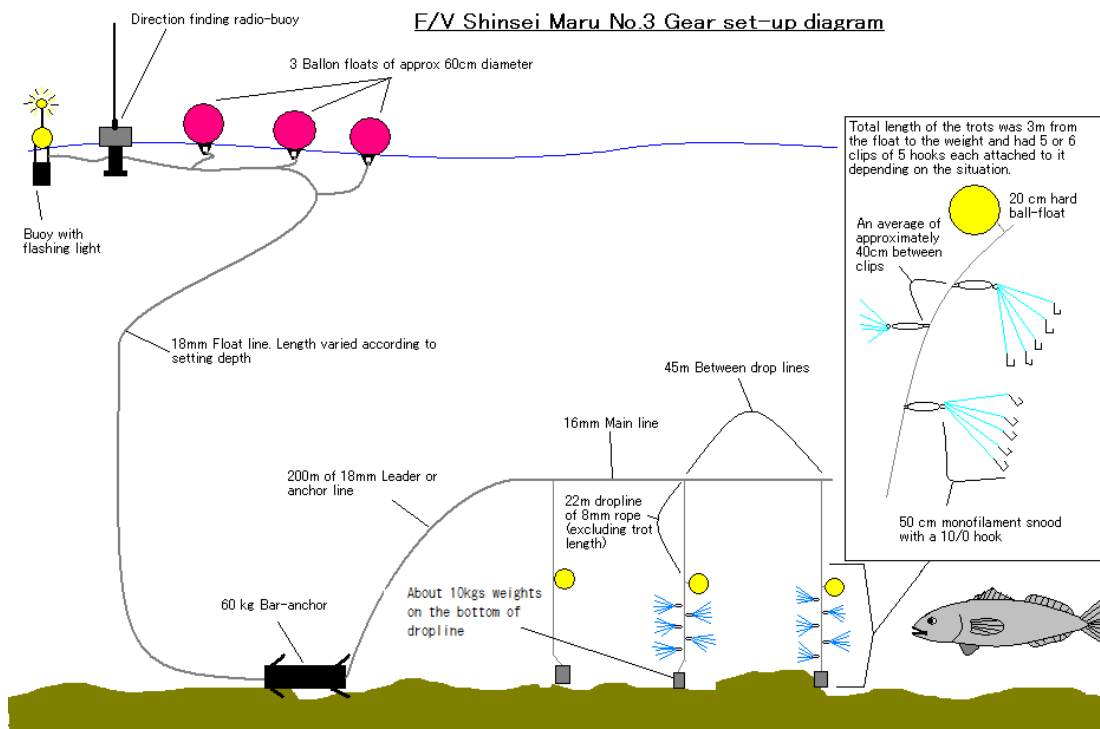
#### **Expected behaviour and feature of fishing gear**

- Trot line normally sinks vertically since the weight is attached on the bottom of each drop line.
- The line is hauled vertically by using hydraulic driven line hauler.
- Only both end of anchors and concrete weights are on the seabed constantly.
- Bottom section of drop lines, hooks and snoods could be on the seabed occasionally.

Taking above into consideration, **the trot line would have much less impact against VME** in comparison with other fishing method such as Auto-line and Spanish line since the most part of main lines and snoods with hooks are constantly on the seabed with these methods.

## **4. Reports**

The report of the Exploratory fishing will be submitted to the Scientific Committee and details of the exploratory fishing will be presented including the sea bed maps created by the collected information.



**Fig.1 Fishing gear configuration (trot line)**

## 5. Vessel Information

(1)	Name of fishing vessel	Shinsei Maru No.3
	Previous names (if known)	Same as above
	Registration number	128862
	IMO number (if issued)	8520094
	External markings	Vessel marked with name and international radio call sign. White hull and white superstructure
	Port of registry	Yaizu – Japan
(2)	Previous flag (if any)	N/A
(3)	International Radio Call Sign	JAAL
(4)	Name of vessel's owner(s)	TAIYO A&F CO.,LTD.
	Address of vessel owner(s)	4-5,TOYOMI-CHO,CHUO-KU,TOKYO,JAPAN
	Beneficial owner(s) if known	Same as above
(5)	Name of licence owner	Same as the owner
	Address of licence owner (operator)	
(6)	Type of vessel	Longline fishing vessel
(7)	Where was vessel built	Shimizu, Shizuoka, Japan
	When was vessel built	1985
(8)	Vessel length overall LOA (m)	47.2
(9)	Details of the implementation of the tamper-proof requirements of the VMS device installed	The vessel is fitted with MAR-GE Argos VMS system. This is a sealed unit which has own GPS inside to ensure the independence from other acoustic devices and protected with official seals that indicate whether the unit has been accessed or tampered.
(10)	Name of operator	Same as the owner
	Address of operator	Same as the owner
(11)	Names and nationality of master and, where relevant, of fishing master	Master: Fuminori Kojima , Japanese Fishing master : Masayuki Matsumura , Japanese
(12)	Type of fishing method(s)	Bottom longline
(13)	Vessel beam (m)	8.7
(14)	Vessel gross registered tonnage	735
(15)	Vessel communication types and numbers (INMARSAT A, B and C)	INMARSAT -FB : 773190498 INMARSAT –C : <a href="mailto:432521000@satmailc.com">432521000@satmailc.com</a>
(16)	Normal crew complement	33
(17)	Power of main engine(s) (kW)	735
(18)	Carrying capacity (tonne)	250M/T
	Number of fish holds	4 holds
	Capacity of all holds (m <sup>3</sup> )	502.4 m <sup>3</sup>
(19)	Any other information in respect of each licensed vessel they consider appropriate (e.g. ice classification) for the purposes of the implementation of the conservation measures adopted by the Commission.	N/A

## **Annex 8 – Guidelines for Fisheries Research**

## **Guidelines for fisheries research and basic marine science activity in the SEAFO Convention Area.**

*The primary purpose of these guidelines is to facilitate that high-quality science may be conducted freely and to the benefit of all while also ensuring that the activity is conducted in a manner which does not cause significant adverse impacts (SAI) on the marine ecosystems and organisms, including fisheries resources.*

### **Definitions of fisheries research, other marine science, and exploratory fishing.**

*Fisheries research* shall as a primary objective create a firm basis for fisheries management advice. As all other sciences, fisheries research shall satisfy best scientific practices and standards. The objective is fulfilled by conducting repeatable experiments, field investigations, and data analyses that collectively enhance the quality of: a) resource and ecosystem assessments, b) evaluations of negative impacts on non-target species, incidental by-catch species and vulnerable marine ecosystems (VMEs), and c) measures implemented to mitigate negative impacts on stocks and VMEs. Top priority outputs from fisheries research are data and analyses on:

- 1) target fisheries resources;
- 2) non-target resources and organisms occurring as incidental by-catch;
- 3) ecosystems that may be impacted by fisheries (e.g. VMEs);
- 4) fishing technologies, methods and strategies facilitating sustainable fisheries.

Fisheries research may be distinguished from primarily *curiosity-driven marine science* which, independent of the utility of the results in relation to management and commercial interests, aims to study the environment, organisms, and ecosystems in order to explain patterns and processes in the sea. In terms of scientific rigor, however, there is basically not a major difference between these two categories.

*Exploratory fisheries*, however, are fishing experiments solely or primarily aimed to discover new resources or new fishing grounds and are as such from the outset motivated by commercial interest. Exploratory fisheries will thus normally not satisfy the above definition of fisheries research. Exploratory fisheries are regulated by SEAFO by agreed protocols, hence these guidelines are not relevant for exploratory fisheries.

### **The Guidelines are as follows:**

Notwithstanding obligations of Chapter VIII of the SEAFO System of Observation, Inspection, Compliance and Enforcement, any party intending to conduct fisheries research as well as other marine science activity in the SEAFO Convention Area (CA) is requested to adhere to the following guidelines during the planning, field and publication phases of the activity:



## 1. Planning phase

1.1 The party is requested to submit to the Executive Secretary of SEAFO, preferably no later than 6 months of the intended period of sea-going activity, a letter of intent explaining the activity being planned. In return, the Executive Secretary will provide guidance on any management measures that may be relevant to the intended research activity, as well forms and routines for submitting reports and/or data.

1.2 Upon receiving the response from SEAFO, the party is requested to submit, no later than one month prior to the sea-going activity, a more detailed plan outlining methods to be used, what areas will be sampled, sampling intensity, samples generated, and data gathered. Evaluated against SEAFO measures, the plan should also provide information on what measures will be implemented to mitigate anticipated negative impacts on fisheries resources and biodiversity, in particular VMEs.

1.3 Upon receipt the letter of intent and detailed plan should be forwarded to all SEAFO Contracting Parties and the SEAFO Scientific Committee (SC).

## 2. Field phases

2.1 During the field experiment every effort should be made to avoid activity compromising the SEAFO measures implemented to conserve fisheries resources and biodiversity, especially VMEs. This applies in all subareas of the SEAFO CA but is particularly important in subareas closed to commercial fishing in order to protect VMEs.

2.2 Sampling levels should satisfy scientific standards and requirements specific to the research being conducted, but excessive sampling of fisheries resources and organisms associated with VMEs should be avoided. The use of invasive sampling methods in benthic environments, especially in areas where VMEs may occur, should preferably be avoided. If invasive sampling cannot be fully excluded from the sampling design, (e.g. tow lengths of trawls, lengths of longlines, and sampling with bottom-touching benthos samplers) should be carefully planned and monitored in order to minimize sampling to a level satisfying the sampling design required for the analyses but at the same time preventing excessive redundancy.

2.3 Sampling of regulated species (e.g. fish resources) is encouraged to the extent that such sampling facilitates provision of much needed data to the SEAFO SC. Care should be taken to avoid incentives to sample excessively by e.g. facilitating or allowing marketing of retained excessive catches. Care should also be taken to avoid the need for discarding of superfluous samples of such species.

2.4 During the conduct of field sampling, considerations should be given to how to facilitate timely post-cruise reporting of data and results of relevance to SEAFO.

2.5 Vessels are requested convey VMS signals or equivalent positional data to SEAFO. This request applies to registered research vessels as well as vessels of other categories conducting research, e.g. commercial fishing vessels chartered or otherwise engaged in science activity led and conducted by the scientific party referred to under Pt. 1.1.

### 3. Publication and data provision phase

3.1 Cruise reports, at least those made available in the public domain, should be provided to SEAFO as soon as possible after the completion of the cruise. The SEAFO Executive Secretary will forward such reports to the CPs for information.

3.2 Any publication deemed relevant to SEAFO resulting from the research activity described under Pt 1 should be submitted to SEAFO and thereby made available for the work of the SEAFO Scientific Committee. This request remains valid throughout the life-time of the project/research programme under which the activity was conducted.

3.3 Parties are requested to submit data of relevance to the assessments and evaluations conducted under the mandate of the SEAFO SC. Such data, marked with source and origin, will be stored in a Secure SEAFO database. Restrictions on use and reference requirements will be agreed between the party and the SEAFO Executive Secretary.

3.4 If raw data cannot be submitted to SEAFO, then aggregate data at an agreed level of aggregation may be made available. Of particular significance would be data on VME indicator species occurrence and density, i.e. data seldom available from fisheries-independent sources.

## **Annex 9 – Conservation Measures**

**Annex 9A – Conservation Measure 29/14 on Bottom Fishing Activities and Vulnerable Marine Ecosystems in the SEAFO Convention Area**



### **Conservation Measure 29/14 on Bottom Fishing Activities and Vulnerable Marine Ecosystems in the SEAFO Convention Area**

The Commission hereby adopts the following conservation measure pursuant to articles 6 and 7 of the Convention:

#### **Article 1. Objective**

1. The objective of this Conservation Measure is to ensure the implementation by SEAFO of effective measures to prevent significant adverse impacts of bottom fishing activities on vulnerable marine ecosystems that, based on the best available scientific information known or likely to occur in the Convention Area.
2. This Conservation Measure takes into account SEAFO's responsibility as a regional fisheries management organization to adopt measures with regards to bottom fishing activities in the Convention Area which contribute to fulfill the key objectives of the UN General Assembly Resolutions on the protection of vulnerable marine ecosystems.
3. For the purpose of this Conservation Measure, SEAFO will take into account the guidance provided by the FAO in the framework of the Code of Conduct for Responsible Fisheries and any other internationally agreed standards, as appropriate.

#### **Article 2. Use of terms**

For the purpose of this Conservation Measure:

- (a) 'bottom fishing activities' means fishing activities where the fishing gear is likely to contact the seafloor during the normal course of fishing operations;
- (b) "encounter" means any encounter with a VME indicator species above threshold levels as set out in Annex 6. Any encounter with a VME indicator species or merely detecting its presence is not sufficient to identify a VME. That identification should be made on a case-by-case basis through assessment by the Scientific Committee;
- (c) "existing bottom fishing areas" means the portion of the Convention Area where bottom fishing has historically occurred since 1987 as set out in Article 4;

- (d) “exploratory bottom fishing” means all commercial bottom fishing activities outside area closures and existing bottom fishing areas, or fisheries within existing bottom fishing areas when a new fishing method and/or strategies are attempted to be used;
- (e) “significant adverse impact” has the same meaning and characteristics as those described in paragraphs 17-20 of the FAO International Guidelines for the Management of Deep-Sea Fisheries in the High Seas;
- (f) “VME indicators” are those species and indicator units included in Annex 6; and
- (g) “vulnerable marine ecosystems”, hereafter VMEs, has the same meaning and characteristics as those contained in paragraph 42 with its Annex and paragraph 43 of the FAO Guidelines for the Management of Deep-Sea Fisheries in the High Seas.

### **Article 3. Regulation of bottom fishing activities**

The Commission shall, taking account of the advice provided by the Scientific Committee, as well as data and information arising from reports pursuant to Article 8 adopts conservation and management measures to prevent significant adverse impacts on VMEs. Such measures may include:

- (a) allowing, prohibiting or restricting bottom fishing activities;
- (b) requiring specific mitigation measures for bottom fishing activities;
- (c) allowing, prohibiting or restricting bottom fishing activities with certain gear types, or changes in gear design and/or deployment; and/or
- (d) any other relevant requirements or restrictions to prevent significant adverse impacts on VMEs.

### **Article 4. Existing bottom fishing areas**

Based on information concerning bottom fishing activities in the period of 1987 to July 2011, there are hereby established existing bottom fishing areas as set out in Annex 1. The Executive Secretary shall update Annex 1 following decisions by the Commission pursuant to Articles 6, paragraph 8.

### **Article 5. Area closures for the protection of VMEs**

1. Fishing activities shall be prohibited in the areas set out and within the coordinates as defined in Annex 2.
2. Within the areas referred to in paragraph 1 Contracting Parties intending to conduct fisheries research and basic marine science activity, which shall exclude exploratory bottom fishing pursuant to Article 6 shall notify the Executive Secretary of their intended research programmes, taking account of Article 206 of the UN Convention on the Law of the Sea, The Executive Secretary shall forward such notifications to all Contracting Parties as well as to the Scientific Committee.

3. In the case where an existing bottom fishing area square overlaps with a closed area, the existing bottom fishing area square is deemed to be closed.

#### **Article 6. Exploratory bottom fishing**

1. Prior to undertake exploratory bottom fishing, Contracting Parties shall gather relevant data to facilitate assessments of exploratory bottom fishing by the Scientific Committee. Such data should preferably include data from sea-bed mapping programmes, i.e. data from echosounders, if practicable multi-beam sounders, and/or other data relevant to the preliminary assessment of the risk of significant adverse impacts on VMEs.

2. The relevant Contracting Party shall forward to the Executive Secretary a Notice of Intent to undertake exploratory bottom fishing at least 60 days prior to the proposed start of the fishery. The Notice of Intent shall be accompanied by the following information:

- (a) harvesting plan, which outlines target species, proposed dates and areas and the type of bottom fishing gear to be used. Area and effort restrictions shall be considered to ensure that fishing occur on a gradual basis in a limited geographical area;
- (b) mitigation plan, including measures to prevent significant adverse impact to VMEs that may be encountered during the fishery;
- (c) catch monitoring plan, including recording/reporting of all species caught;
- (d) a sufficient system for recording/reporting of catch, detailed to conduct an assessment of activity, if required;
- (e) data collection plan to facilitate the identification of VMEs in the area fished;

And make every effort to also include the following information:

- (f) fine-scale data collection plan on the distribution of intended tows and sets, to the extent practicable on a tow-by-tow and set-by-set basis;
- (g) plans for monitoring of bottom fishing activities using gear monitoring technology, including cameras if practicable; and
- (h) monitoring data obtained pursuant to paragraph 1 of this Article .

3. The Notice of Intent along with the accompanying information shall be forwarded to the Executive Secretary. Then the Notice of Intent will be evaluated by the Scientific Committee and the Commission during their respective annual meetings. If need be, this process can be done by correspondence allowing Scientific Committee 30 days for scientific evaluation and an additional 30 days for the Commission to approve the proposal.

4. Exploratory bottom fishing shall only commence after having been assessed by the Scientific Committee and approved by the Commission.

5. Preference shall be given by the relevant Contracting Party to exploratory bottom fishing using fishing gear and methods with the least bottom contact, in well-mapped areas

and at times when impacts are likely to have the least adverse impacts on organisms other than the target species.

6. The relevant Contracting Party shall ensure that vessels flying their flag conducting exploratory fishing have a scientific observer on board. Observers shall collect data in accordance with a VME Data Collection Protocol set out in Annex 4.

7. The relevant Contracting Party shall provide promptly a report of the results of such activities to the Executive Secretary for circulation to all Contracting Parties. It shall ensure that the data, which derives from exploratory bottom fishing, will be made available to the Scientific Committee.

8. The Commission shall review the assessments undertaken in accordance with Article 7 and the results of the fishing protocols implemented by the participating fleets. The Commission may decide to authorise new bottom fishing activities based upon the results of exploratory bottom fishing, taking due account of the rules and procedures set out in Annex 5. Areas where such new bottom fishing activities are authorised shall be defined as “existing bottom fishing areas” pursuant to Article 4.

#### **Article 7. Assessment of proposed exploratory bottom fishing activities**

1. Each Contracting Party proposing to undertake exploratory bottom fishing shall submit to the Executive Secretary, in addition to the Notice of Intent, a preliminary assessment of the known and anticipated impacts of the proposed bottom fishing activity as described in Annex 3.

2. The Executive Secretary shall promptly forward the assessment to all Contracting Parties and the Scientific Committee. The elaboration of the assessment shall be carried out in accordance with guidance developed by the Scientific Committee, or, in the absence of such guidance, to the best of the Contracting Party’s ability. The Scientific Committee shall, either at its next session or through correspondence, undertake an evaluation, in accordance with the precautionary approach, of the submitted documentation, taking account of the risks of significant adverse impact on VMEs. Such evaluation shall take place no later than 30 days following the date of submission of the Notice of Intent.

3. The Scientific Committee shall undertake an evaluation of the impact assessment, according to procedures and standards it develops, and provide advice to the Commission as to whether the proposed bottom fishing activity would have significant adverse impacts on VMEs and, if so, whether mitigation measures would prevent such impacts. The Scientific Committee may use in its evaluation additional information available to it, including information from other fisheries in the region or similar fisheries elsewhere. The Commission shall, within 30 days of receiving this advice, either give or withhold its approval for the proposed bottom fishing activities.

#### **Article 8. Encounters with possible VMEs**

1. Each Contracting Party shall ensure that fishing vessels flying their flag abide by the following rules, where, in the course of bottom fishing activities, evidence of VMEs is encountered:



- (a) fishing vessels shall quantify catch of VME indicators;
  - (b) if the quantity of VME indicators caught in a fishing operation (such as trawl tow or set of a longline) is beyond the thresholds defined in Annex 6, the following shall apply:
    - (i) if an encounter is discovered the vessel master shall cease fishing and move away at least 2 nautical miles from the end point of the trawl tow in the direction least likely to result in further encounters;
    - (ii) if an encounter is discovered in connection with other bottom fishing gears the fishing vessel shall cease fishing and move away at least 1 nautical miles from the position that the evidence suggests is closest to the exact encounter location, defining a buffer area with a 1 nautical mile radius. The master shall use his or her best judgment based on all available sources of information; and
    - (iii) the master shall report the incident, including the “track” or position determined under sub-paragraphs (i) and (ii), without delay to its flag State, which shall forward the information to the Executive Secretary immediately. Contracting Parties may if they so wish also require their vessels to report the incident directly to the Executive Secretary.
2. The Executive Secretary shall immediately inform all Contracting Parties, and archive the information received pursuant to paragraph 1, and shall at the same time implement a temporary closure outside existing fishing areas.
  3. In order to assess accurately the position and the extent of the VME encountered in terms of paragraph 1 of this article, sea bed mapping, preferably, should be carried out using echo-sounders, and if practicable multi-beam sounders. The result of any mapping shall be submitted to the Scientific Committee for its evaluation and advice. This advice shall be forwarded to the Commission and contribute to the basis for a decision by the Commission to reopen or close such areas.
  4. The Scientific Committee shall examine the temporary closure at its next meeting or by correspondence. If the Scientific Committee advises that the area has sufficient evidence of a VME, the Executive Secretary shall request Contracting Parties to maintain the temporary closure until such time that the Commission has acted upon the advice from the Scientific Committee. If the Scientific Committee evaluation does not conclude that the temporary closed area has sufficient evidence of a VME, the Executive Secretary shall inform Contracting Parties which may re-open the area to their fishing vessels.

## **Article 9. Repeals**

Conservation Measures 26/13 and Conservation Measure 18/10 are herewith repealed.

**Annex 1 - Existing bottom fishing areas****A. All gears**

Latitude and longitude of the existing bottom fishing areas:

**Division A0**

Coordinate	Lat	Long
1	-11	-6
2	-11	-5
3	-12	-5
4	-12	-6

1	-9	-6
2	-9	-5
3	-10	-5
4	-10	-6

**Division A1**

Coordinate	Lat	Long
1	-11	-1
2	-11	0
3	-12	0
4	-12	-1
5	-11.9	-1
6	-11.58	-0.6667
7	-11.257	-1

1	-7	1
2	-8	1
3	-8	0
4	-6	0
5	-6	2
6	-7	2

**Division B1**

Coordinate	Lat	Long
1	-20	8
2	-20	10
3	-21	10
4	-21	8

1	-27	5
2	-25	5
3	-25	6
4	-24	6
5	-24	8
6	-23	8
7	-23	9
8	-24	9
9	-24	8
10	-25	8
11	-25	7
12	-27	7

**Division C0**

Coordinate	Lat	Long
1	-32	-3
2	-32	-2
3	-32.3	-2
4	-32.04	-3

**Division C1**

Coordinate	Lat	Long
1	-33	2
2	-31	2
3	-31	3
4	-30	3
5	-30	4
6	-31	4
7	-31	3
8	-33	3

1	-31	8
2	-31	9
3	-32	9
4	-32	8

**Division D0**

Coordinate	Lat	Long
1	-48	-14
2	-47	-14
3	-47	-12
4	-48	-12

1	-48	-11
2	-47	-11
3	-47	-9
4	-46	-9
5	-46	-6
6	-47	-6
7	-47	-7
8	-48	-7
9	-48	-9

1	-45	-2
2	-44	-2
3	-44	-3
4	-43	-3
5	-43	-2
6	-42	-2
7	-42	-1
8	-45	-1

1	-44	1
2	-42	1
3	-42	3
4	-44	3

**Division D1**

Coordinate	Lat	Long
1	-50	5
2	-49	5
3	-49	6
4	-48	6
5	-48	7
6	-46	7
7	-46	11
8	-47	11
9	-47	12
10	-48	12
11	-48	10
12	-49	10
13	-49	9
14	-50	9

**B. Set longlines**

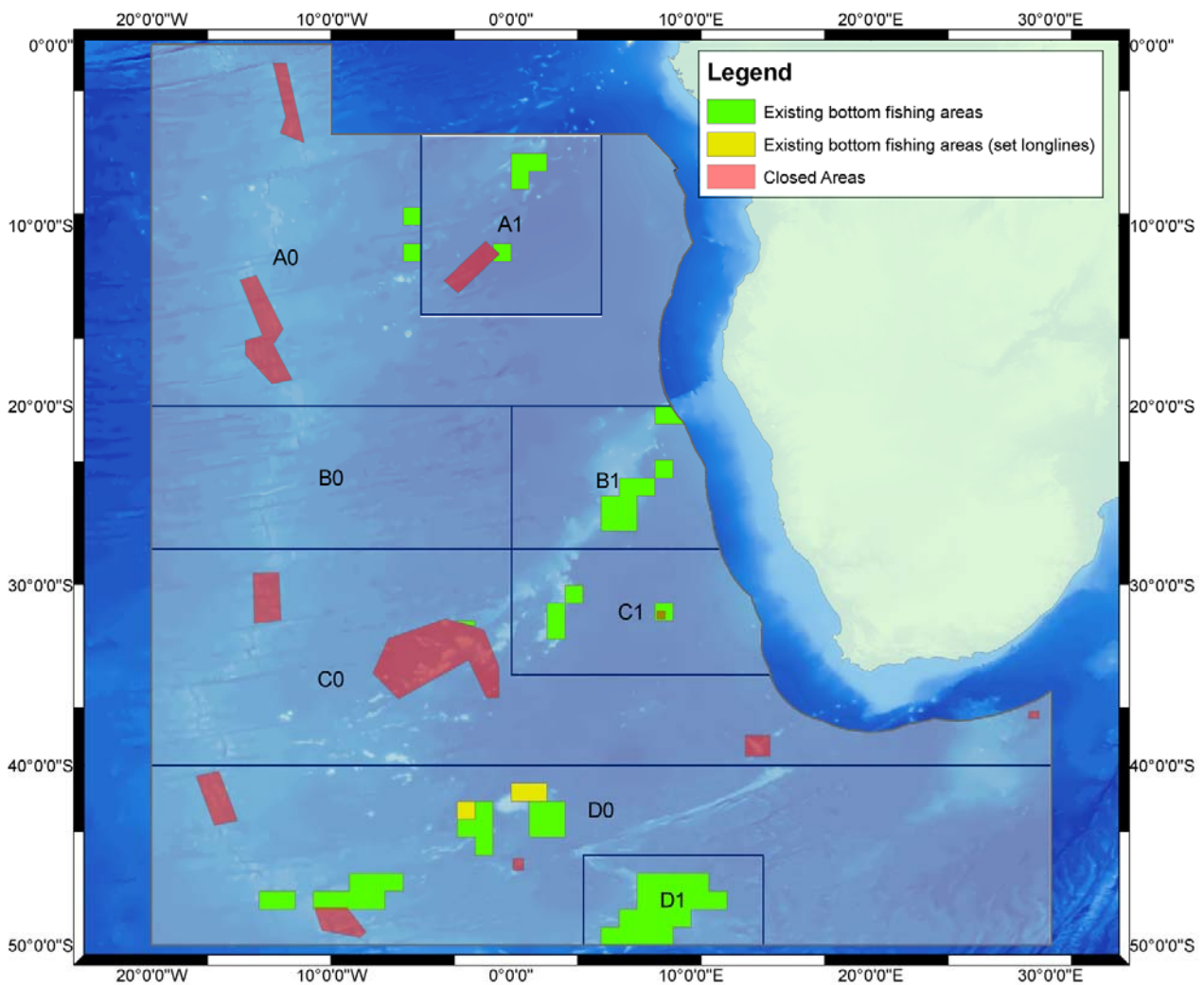
Latitude and longitude of the existing bottom fishing areas for set longlines:

**Division D0**

Coordinate	Lat	Long
1	-42	-3
2	-42	-2
3	-43	-2
4	-43	-3

1	-41	0
2	-41	2
3	-42	2
4	-42	0

**Figure 1 – Composite map of existing bottom fishing areas**



## **Annex 2**

### **Closed areas and their coordinates**

#### **SUB-AREA A**

- Area: (Kreps seamount), Number 16 on the attached map – considered to be unexploited.

Coordinates: 13°00'S 15°05'W  
12°44'S 14°10'W  
15°43'S 12°40'W  
16°34'S 13°13'W  
18°32'S 12°10'W  
18°46'S 13°18'W  
17°10'S 14°46'W  
16°20'S 14°46'W  
16°05'S 13°50'W

- Area: (Unnamed seamount), Number 17 on the attached map – considered to be unexploited.

Coordinates: 01°00'S 13°15'W  
01°00'S 12°30'W  
05°25'S 11°30'W  
04°52'S 12°51'W  
04°00'S 12°33'W

#### **DIVISION A1**

- Area: (Malachit Guyot Seamount), Number 1 on attached map – considered to be unexploited.

Coordinates: 10°51'S 01°25'W  
11°35'S 00°40'W  
13°44'S 02°57'W  
13°03'S 03°45'W

#### **SUB-AREA C**

- Area: (Wüst seamount), Number 7 on the attached map – considered to be slightly exploited.

Coordinates: 32°57'S 06°50'W  
31°51'S 03°39'W

32°28'S 01°30'W  
34°34'S 00°40'W  
36°17'S 00°40'W  
36°17'S 01°23'W  
34°10'S 02°23'W  
36°20'S 06°16'W  
34°53'S 07°43'W

- Area: (Africana seamount), Number 8 on the attached map – considered to be unexploited.

Coordinates: 37°00'S 28°45'E  
37°00'S 29°21'E  
37°25'S 29°21'E  
37°25'S 28°45'E

- Area: (Schmidt-Ott Seamount), Number 9 on the attached map - considered to be slightly exploited.

Coordinates: 38°20'S 13°00'E  
38°20'S 14°24'E  
39°32'S 14°24'E  
39°32'S 13°00'E

- Area: (Unnamed), Number 15 on the attached map - considered to be unexploited.

Coordinates: 29°19'S 14°22'W  
29°17'S 12°54'W  
31°57'S 12°47'W  
32°08'S 14°18'W

## **DIVISION C1**

- Area: (Vema Seamount), Number 6 on the attached map – considered to be slightly exploited.

Coordinates: 31°27'S 08°06'E  
31°27'S 08°35'E  
31°53'S 08°35'E  
31°53'S 08°06'E

## **SUB-AREA D**

- Area: (Herdman Seamounts), Number 12 on the attached map – considered to be unexploited.

Coordinates: 45°10'S 00°05'E  
45°10'S 00°42'E  
45°50'S 00°42'E  
45°50'S 00°05'E

- Area: (Unnamed Seamounts), Number 14 on the attached map – considered to be unexploited.

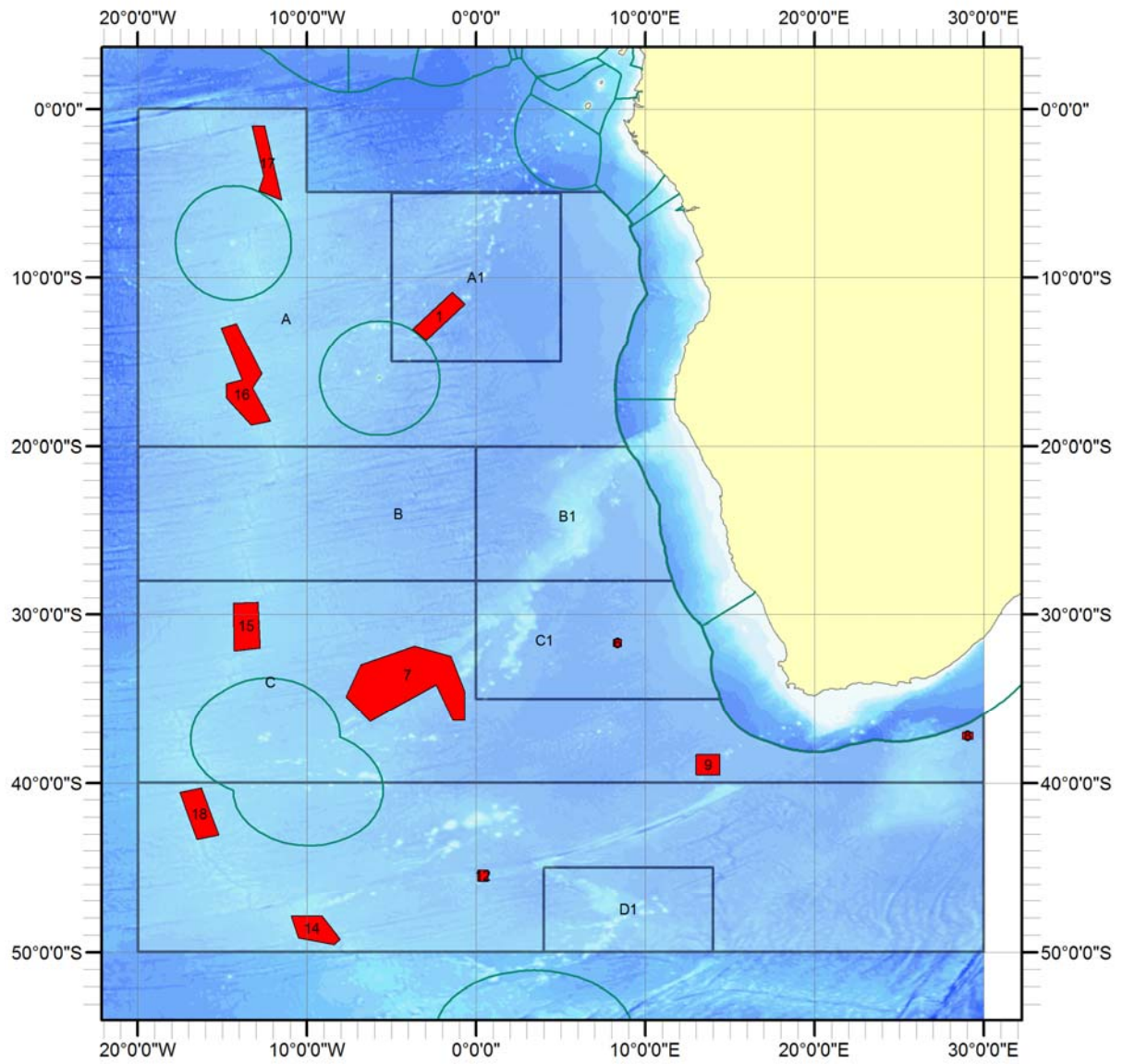
Coordinates: 47°54'S 10°57'W  
47°54'S 09°07'W  
49°15'S 08°03'W  
49°34'S 08°24'W  
49°10'S 10°31'W

- Area: (Unnamed Seamounts), Number 18 on the attached map – considered to be slightly exploited.

Coordinates: 40°35'S 17°32'W  
40°18'S 16°15'W  
43°04'S 15°12'W  
43°20'S 16°30'W



**Figure 2 – Area closures**



### **Annex 3**

#### **Assessment of Exploratory Bottom Fishing Activities**

Assessments should address, *inter alia*:

- (a) type(s) of fishing conducted or contemplated, including vessels and gear types, fishing areas, target and potential by catch species, fishing effort levels and duration of fishing (harvesting plan);
- (b) best available scientific and technical information on the current state of fishery resources and baseline information on the ecosystems, habitats and communities in the fishing area, against which future changes are to be compared;
- (c) identification, description and mapping (geographical location and extent) of VMEs known or likely to occur in the fishing area;
- (d) identification, description and evaluation of the occurrence, character, scale and duration of likely impacts, including cumulative impacts of the proposed fishery on VMEs in the fishing area;
- (e) data and methods used to identify, describe and assess the impacts of the activity, the identification of gaps in knowledge, and an evaluation of uncertainties in the information presented in the assessment;
- (f) risk assessment of likely impacts by the fishing operations to determine which impacts on VMEs are likely to be significant adverse impacts; and
- (g) mitigation and management measures to be used to prevent significant adverse impacts on VMEs and the measures to be used to monitor effects of the fishing operations.

## **Annex 4**

### **VME Data Collection Protocol**

Observers on fishing vessels in the SEAFO Convention Area who are deployed pursuant to Article 6, paragraph 7 of this Conservation Measure shall:

1. Monitor any set for evidence of presence of VMEs and the identify coral, sponges and other organisms to the lowest level possible.
2. Record the following information for identification of VMEs: vessel name, gear type, date, position (latitude/longitude), depth, species code, trip-number, set-number, and name of the observer on datasheets.
3. Collect representative biological samples from the entire VME catch. (Biological samples shall be collected and frozen when requested by the scientific authority in a Contracting Party). For some coral species that are under the CITES list this will not be possible and for these species photographs should be taken.
4. Provide samples to the scientific authority of a Contracting Party at the end of the fishing trip.

## **Annex 5**

### **Rules and procedures for opening of new fishing areas**

1. It is required to have exploratory fishing data within a specified area without reaching the VME threshold to open that area for fishing:
  - (a) two years of data within 5 year period for an area (<2000m) adjacent to an existing fishing area;
  - (b) and three-years of data within 5 years for areas (<2000m) not adjacent to an existing fishing area; and
  - (c) existing fishing records/data that contain VME data may be counted as a first year data set.
2. All 1x1° areas within the exploratory area that contain a VME encounter should be excluded from the proposed new fishing area.
3. Exploratory data stations should be set in such a way that it covers the exploratory area representatively above the 2000m depth isobar.

## Annex 6

### VME indicators and threshold levels

#### 1. Definition of encounter -

An encounter is defined to be, above threshold levels as set out in paragraph 2, with VME indicator species of coral identified as antipatharians, gorgonians, cerianthid anemone fields, *Lophelia*, and sea pen fields or other VME elements.

#### 2. Threshold levels

An encounter with VME indicator species is defined for each of the following fishing gears as follows:

Trawl tow – more than 600 kg of live sponges and/or 60 kg of live coral in existing fishing areas and more than 400 kg of live sponges and/or 60 kg of live coral in new fishing areas.

Longline set – at least 10 VME-indicator units (1 unit = 1kg or 1 litre of live coral and/or live sponge) in one 1200m section of line or 1000 hooks, whichever is the shorter, in both existing and new fishing areas;

Pot set – at least 10 VME-indicator units (1 unit = 1kg or 1 litre of live coral and/or live sponge) in one 1200m section of line in both existing and new fishing areas.

The definition of VME indicator units for bottom longlines and pots is as follows:

The quantity of VME-indicator organisms (i.e. live corals and/or live sponges) recovered during hauling should be reported for each 1200m section of the longline or potline (in the case of longlines - or 1000 hooks whichever is the shorter) as:

- (a) Volume (litre) for VME-indicator organisms which fit into 10-litre container;
- (b) Weight (kg) for VME-indicator organisms which do not fit 10-litre container (e.g. branching species); and
- (c) VME-indicator units which is the combined total of volume of VME-indicator organisms which fit into 10-litre and weight of VME-indicator organisms which do not fit into containers of 10-litre (i.e. unit = volume + weight).

-----

**Annex 9B – Conservation Measure 28/14: on Total Allowable Catches and related conditions for Patagonian Toothfish, and Deep-Sea Red Crab for 2015, Alfonsino, Orange Roughy and Pelagic Armourhead for 2015 & 2016 in the SEAFO Convention Area.**



**Conservation Measure 28/14: on Total Allowable Catches and related conditions for Patagonian Toothfish, and Deep-Sea Red Crab for 2015, Alfonsino, Orange Roughy and Pelagic Armourhead for 2015 & 2016 in the SEAFO Convention Area.**

The Commission taking account of the scientific advice provided by the Scientific Committee and pursuant to Article 6 of the Convention and has adopted the following measures:

**1. Total allowable catches**

- a) Patagonian toothfish: 276 tonnes for Sub-area D and zero tonnes for the remainder of the SEAFO CA for 2015;
- b) Deep-Sea Red Crab: 200 tonnes in Division B1 and 200 tonnes in the remainder of the Convention Area for 2015;
- c) Alfonsino: 200 tonnes for the SEAFO CA of which a maximum of 132 tonnes may be taken in Division B1 for 2015 & 2016;
- d) Orange roughy: zero tonnes directed fishery in Division B1 and 4 tonnes bycatch allowance in Division B1, and 50 tonnes in the remainder of the SEAFO CA for 2015 & 2016;
- e) Pelagic Amourhead: 143 tonnes for the SEAFO CA for 2015 & 2016.

**2. Vessel reporting requirements**

Each Contracting Party shall ensure that their vessels report catch including nil returns by electronic means to the SEAFO Secretariat every 5 days of the fishing trip.

**3. Bycatch of Alfonsino/Pelagic Armourhead**

Taking into account that highly selective fishery for pelagic armourhead and alfonsino is practically possible by trawl fishery in the CA, following measures should be applied for trawl fishery targeting armourhead and alfonsino in the CA:

- (a) Any vessels engaging in trawl fisheries targeting armourhead and/or alfonsino should send daily catch reports to the Secretariat;

(b) Based on these daily catch reports, the cumulative catches of armourhead and alfonsino should be closely monitored by the Secretariat;

(c) Fishing activities should be developed by first targeting one species (first target species);

(d) When the Secretariat determines that 95% of the TAC for one of that species is reached in a management area, the fleet should be instructed by the Secretariat to target the other species (second target species). A total by catch of 5% of the first target species TAC is allowed to be taken when targeting the second species in the same management area; and

(e) If 95% of the TAC for the second species is already reached by other vessels, the vessel can fish its second target species as long as the TAC is not exhausted.

#### **4. Closure of fisheries**

The Executive Secretary shall close the fisheries when the total allowable catches referred to in paragraph 1 are deemed to be exhausted.

#### **5. CPUE Data**

Flag States of vessels involved in these fisheries shall provide detailed catch and effort data in accordance with Article 18 of the System of Observation, Inspection, Compliance and Enforcement.

#### **6. Status of Conservation Measure**

Conservation Measures **27/13** is herewith repealed.